

CHM Antibody
Rabbit mAb
Catalog # AP92775**Specification**

CHM Antibody - Product Information

Application	WB, ICC
Primary Accession	P24386
Reactivity	Rat
Clonality	Monoclonal
Other Names	
CHM; Choroideraemia protein; GGTA; REP1; TCD;	
Isotype	Rabbit IgG
Host	Rabbit
Calculated MW	73476 Da

CHM Antibody - Additional Information

Purification	Affinity-chromatography
Immunogen	A synthesized peptide derived from human CHM
Description	Binds unprenylated Rab proteins, presents it to the catalytic Rab GGTase dimer, and remains bound to it after the geranylgeranyl transfer reaction.
Storage Condition and Buffer	Rabbit IgG in phosphate buffered saline , pH 7.4, 150mM NaCl, 0.02% sodium azide and 50% glycerol. Store at +4°C short term. Store at -20°C long term. Avoid freeze / thaw cycle.

CHM Antibody - Protein Information**Name** CHM**Synonyms** REP1, TCD**Function**

Substrate-binding subunit of the Rab geranylgeranyltransferase (GGTase) complex. Binds unprenylated Rab proteins and presents the substrate peptide to the catalytic component B composed of RABGGTA and RABGGTB, and remains bound to it after the geranylgeranyl transfer reaction. The component A is thought to be regenerated by transferring its prenylated Rab back to the donor membrane. Besides, a pre-formed complex consisting of CHM and the Rab GGTase dimer (RGGT or component B) can bind to and prenylate Rab proteins; this alternative pathway is proposed to be the predominant pathway for Rab protein geranylgeranylation.

Cellular Location

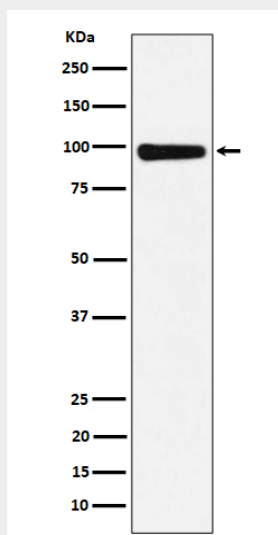
Cytoplasm, cytosol.

CHM Antibody - Protocols

Provided below are standard protocols that you may find useful for product applications.

- [Western Blot](#)
- [Blocking Peptides](#)
- [Dot Blot](#)
- [Immunohistochemistry](#)
- [Immunofluorescence](#)
- [Immunoprecipitation](#)
- [Flow Cytometry](#)
- [Cell Culture](#)

CHM Antibody - Images



Western blot analysis of CHM expression in 293T cell lysate.