

SCIN Antibody
Rabbit mAb
Catalog # AP92777**Specification****SCIN Antibody - Product Information**

Application	WB, IHC
Primary Accession	O9Y6U3
Reactivity	Rat
Clonality	Monoclonal
Other Names	
Adseverin; Scin; Scinderin;	
Isotype	Rabbit IgG
Host	Rabbit
Calculated MW	80489 Da

SCIN Antibody - Additional Information

Dilution	WB~~1:1000 IHC~~1:100~500
Purification	Affinity-chromatography
Immunogen	A synthesized peptide derived from human SCIN
Description	Ca(2+)-dependent actin filament-severing protein that is presumed to have a regulatory function in exocytosis by affecting the organization of the microfilament network underneath the plasma membrane.
Storage Condition and Buffer	Rabbit IgG in phosphate buffered saline , pH 7.4, 150mM NaCl, 0.02% sodium azide and 50% glycerol. Store at +4°C short term. Store at -20°C long term. Avoid freeze / thaw cycle.

SCIN Antibody - Protein Information

Name SCIN {ECO:0000303|PubMed:8547642, ECO:0000312|HGNC:HGNC:21695}

Function

Ca(2+)-dependent actin filament-severing protein that has a regulatory function in exocytosis by affecting the organization of the microfilament network underneath the plasma membrane (PubMed:26365202, PubMed:8547642). Severing activity is inhibited by phosphatidylinositol 4,5-bis-phosphate (PIP2) (By similarity). In vitro, also has barbed end capping and nucleating activities in the presence of Ca(2+). Required for megakaryocyte differentiation, maturation, polyploidization and apoptosis with the release of platelet-like particles (PubMed:11568009)

target="_blank">11568009). Plays a role in osteoclastogenesis (OCG) and actin cytoskeletal organization in osteoclasts (By similarity). Regulates chondrocyte proliferation and differentiation (By similarity). Inhibits cell proliferation and tumorigenesis. Signaling is mediated by MAPK, p38 and JNK pathways (PubMed:11568009).

Cellular Location

Cytoplasm, cytoskeleton. Cell projection, podosome {ECO:0000250|UniProtKB:Q60604}

Tissue Location

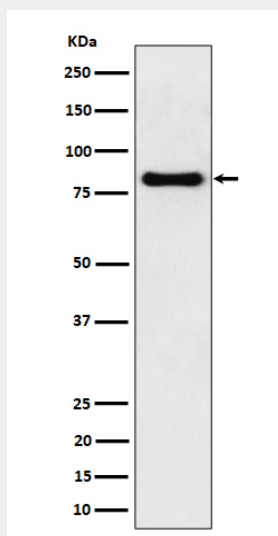
Expressed in megakaryocytes.

SCIN Antibody - Protocols

Provided below are standard protocols that you may find useful for product applications.

- [Western Blot](#)
- [Blocking Peptides](#)
- [Dot Blot](#)
- [Immunohistochemistry](#)
- [Immunofluorescence](#)
- [Immunoprecipitation](#)
- [Flow Cytometry](#)
- [Cell Culture](#)

SCIN Antibody - Images



Western blot analysis of SCIN expression in mouse kidney cell lysate.