

**TAF15 Antibody**  
**Rabbit mAb**  
**Catalog # AP92779****Specification**

---

**TAF15 Antibody - Product Information**

Application	WB, IHC, FC, ICC
Primary Accession	<a href="#">Q92804</a>
Reactivity	Rat
Clonality	Monoclonal

**Other Names**

Npl3; RBP56; RNA binding protein 56; TAF; TAF15; TAF2N; TAFII68;

Isotype	Rabbit IgG
Host	Rabbit
Calculated MW	61830 Da

**TAF15 Antibody - Additional Information**

Dilution	WB~~1:1000 IHC~~1:100~500 FC~~1:10~50 ICC~~N/A
Purification	Affinity-chromatography
Immunogen	A synthesized peptide derived from human TAF15
Description	RNA and ssDNA-binding protein that may play specific roles during transcription initiation at distinct promoters. Can enter the preinitiation complex together with the RNA polymerase II (Pol II).
Storage Condition and Buffer	Rabbit IgG in phosphate buffered saline , pH 7.4, 150mM NaCl, 0.02% sodium azide and 50% glycerol. Store at +4°C short term. Store at -20°C long term. Avoid freeze / thaw cycle.

**TAF15 Antibody - Protein Information****Name** TAF15**Synonyms** RBP56, TAF2N**Function**

RNA and ssDNA-binding protein that may play specific roles during transcription initiation at distinct promoters. Binds to ssRNA containing the consensus sequence 5'-AGGUAA-3' (PubMed:<a href="http://www.uniprot.org/citations/21256132" target="\_blank">21256132</a>). Can enter the preinitiation complex together with the RNA polymerase II (Pol II).

**Cellular Location**

Nucleus. Cytoplasm. Note=Shuttles from the nucleus to the cytoplasm

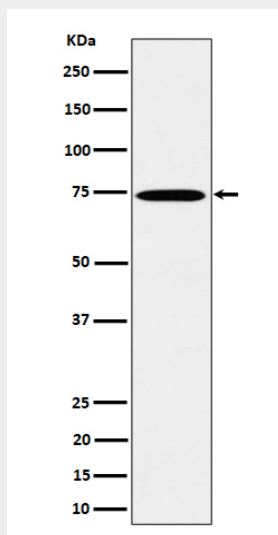
**Tissue Location**

Ubiquitous. Observed in all fetal and adult tissues

**TAF15 Antibody - Protocols**

Provided below are standard protocols that you may find useful for product applications.

- [Western Blot](#)
- [Blocking Peptides](#)
- [Dot Blot](#)
- [Immunohistochemistry](#)
- [Immunofluorescence](#)
- [Immunoprecipitation](#)
- [Flow Cytometry](#)
- [Cell Culture](#)

**TAF15 Antibody - Images**

Western blot analysis of TAF15 expression in HeLa cell lysate.