

XDH Antibody (N-term)
Affinity Purified Rabbit Polyclonal Antibody (Pab)
Catalog # AP9277A

Specification

XDH Antibody (N-term) - Product Information

Application	WB, IHC-P, FC,E
Primary Accession	P47989
Reactivity	Human, Mouse
Host	Rabbit
Clonality	Polyclonal
Isotype	Rabbit IgG
Antigen Region	206-234

XDH Antibody (N-term) - Additional Information

Gene ID 7498

Other Names

Xanthine dehydrogenase/oxidase, Xanthine dehydrogenase, XD, Xanthine oxidase, XO, Xanthine oxidoreductase, XOR, XDH, XDHA

Target/Specificity

This XDH antibody is generated from rabbits immunized with a KLH conjugated synthetic peptide between 206-234 amino acids from the N-terminal region of human XDH.

Dilution

WB~~1:1000
IHC-P~~1:100~500
FC~~1:10~50
E~~Use at an assay dependent concentration.

Format

Purified polyclonal antibody supplied in PBS with 0.09% (W/V) sodium azide. This antibody is purified through a protein A column, followed by peptide affinity purification.

Storage

Maintain refrigerated at 2-8°C for up to 2 weeks. For long term storage store at -20°C in small aliquots to prevent freeze-thaw cycles.

Precautions

XDH Antibody (N-term) is for research use only and not for use in diagnostic or therapeutic procedures.

XDH Antibody (N-term) - Protein Information

Name XDH

Synonyms XDHA

Function Key enzyme in purine degradation. Catalyzes the oxidation of hypoxanthine to xanthine. Catalyzes the oxidation of xanthine to uric acid. Contributes to the generation of reactive oxygen species. Has also low oxidase activity towards aldehydes (in vitro).

Cellular Location

Cytoplasm. Peroxisome. Secreted

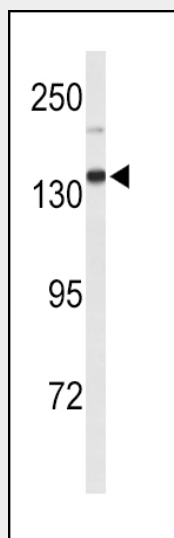
Tissue Location

Detected in milk (at protein level). {ECO:0000269|Ref.12}

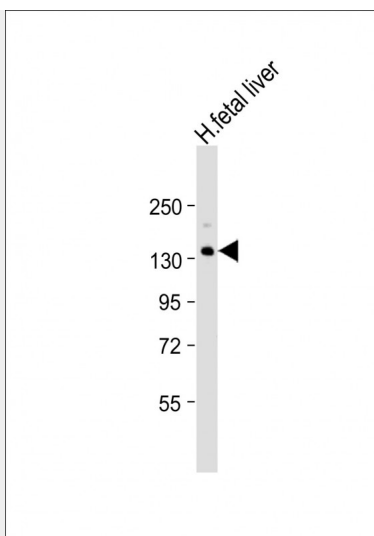
XDH Antibody (N-term) - Protocols

Provided below are standard protocols that you may find useful for product applications.

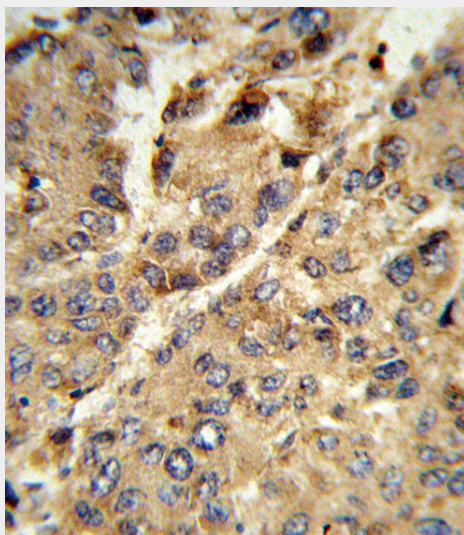
- [Western Blot](#)
- [Blocking Peptides](#)
- [Dot Blot](#)
- [Immunohistochemistry](#)
- [Immunofluorescence](#)
- [Immunoprecipitation](#)
- [Flow Cytometry](#)
- [Cell Culture](#)

XDH Antibody (N-term) - Images

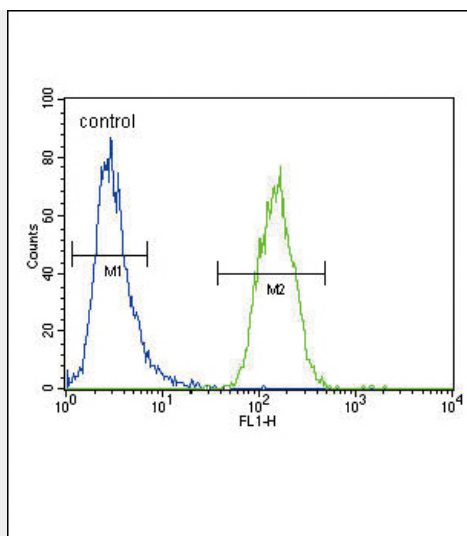
Western blot analysis of XDH Antibody (N-term) (Cat. #AP9277a) in mouse lung tissue lysates (35ug/lane). XDH (arrow) was detected using the purified Pab.



Anti-XDH Antibody (N-term) at 1:1000 dilution + human fetal liver lysate Lysates/proteins at 20 μ g per lane. Secondary Goat Anti-Rabbit IgG, (H+L), Peroxidase conjugated at 1/10000 dilution. Predicted band size : 146 kDa Blocking/Dilution buffer: 5% NFDM/TBST.



Formalin-fixed and paraffin-embedded human hepatocarcinoma reacted with XDH Antibody (N-term), which was peroxidase-conjugated to the secondary antibody, followed by DAB staining. This data demonstrates the use of this antibody for immunohistochemistry; clinical relevance has not been evaluated.



XDH Antibody (N-term) (Cat. #AP9277a) flow cytometric analysis of MDA-MB231 cells (right histogram) compared to a negative control cell (left histogram). FITC-conjugated goat-anti-rabbit secondary antibodies were used for the analysis.

XDH Antibody (N-term) - Background

XDH belongs to the group of molybdenum-containing hydroxylases involved in the oxidative metabolism of purines. The enzyme is a homodimer. This protein can be converted to xanthine oxidase by reversible sulfhydryl oxidation or by irreversible proteolytic modification. Defects in xanthine dehydrogenase cause xanthinuria, may contribute to adult respiratory stress syndrome, and may potentiate influenza infection through an oxygen metabolite-dependent mechanism.

XDH Antibody (N-term) - References

Ross, C.J., et.al., Nat. Genet. 41 (12), 1345-1349 (2009)
Taibi, G., et.al., J. Cell. Biochem. 108 (3), 688-692 (2009)
Spiekermann, S., et.al., Eur. Respir. J. 34 (1), 276 (2009)