

C1s Antibody
Rabbit mAb
Catalog # AP92780**Specification**

C1s Antibody - Product Information

Application	WB, IHC, IP
Primary Accession	P09871
Clonality	Monoclonal
Other Names	
C1 esterase; C1S;	

Isotype	Rabbit IgG
Host	Rabbit
Calculated MW	76684 Da

C1s Antibody - Additional Information

Dilution	WB~~1:1000 IHC~~1:100~500 IP~~N/A
Purification	Affinity-chromatography
Immunogen	A synthesized peptide derived from human C1s
Description	C1s B chain is a serine protease that combines with C1q and C1s to form C1, the first component of the classical pathway of the complement system. C1r activates C1s so that it can, in turn, activate C2 and C4.
Storage Condition and Buffer	Rabbit IgG in phosphate buffered saline , pH 7.4, 150mM NaCl, 0.02% sodium azide and 50% glycerol. Store at +4°C short term. Store at -20°C long term. Avoid freeze / thaw cycle.

C1s Antibody - Protein Information

Name C1S {ECO:0000303|PubMed:3500856, ECO:0000312|HGNC:HGNC:1247}

Function

Component of the complement C1 complex, a multiprotein complex that initiates the classical pathway of the complement system, a cascade of proteins that leads to phagocytosis and breakdown of pathogens and signaling that strengthens the adaptive immune system (PubMed:11445589, PubMed:16169853, PubMed:417728, PubMed:467643, PubMed:6271784, PubMed:6282646, PubMed:<a

[6319179](http://www.uniprot.org/citations/6319179), PubMed:70787, PubMed:9422791). C1s is activated following association of the C1 complex with immunoglobulins (IgG or IgM) complexed with antigens to form antigen-antibody complexes on the surface of pathogens (PubMed:34155115). C1s is cleaved and activated by C1R to generate C1s subcomponent heavy and light chains (PubMed:11445589, PubMed:6271784). C1s subcomponent light chain then cleaves and activates C2 and C4, the next components of the classical complement pathway (PubMed:16169853, PubMed:467643, PubMed:6282646, PubMed:6319179, PubMed:6906228, PubMed:70787, PubMed:9422791).

Cellular Location

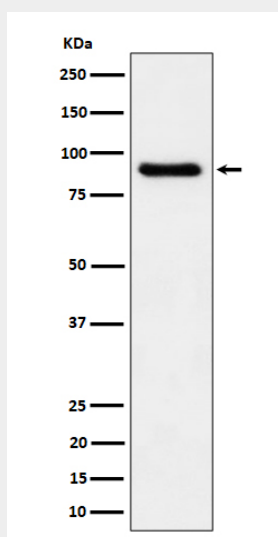
Secreted. Cell surface. Note=Recruited to the surface of pathogens by the C1Q subcomplex.

C1s Antibody - Protocols

Provided below are standard protocols that you may find useful for product applications.

- [Western Blot](#)
- [Blocking Peptides](#)
- [Dot Blot](#)
- [Immunohistochemistry](#)
- [Immunofluorescence](#)
- [Immunoprecipitation](#)
- [Flow Cytometry](#)
- [Cell Culture](#)

C1s Antibody - Images



Western blot analysis of C1s expression in human plasma cell lysate.