

ERp19 Antibody
Rabbit mAb
Catalog # AP92782**Specification**

ERp19 Antibody - Product Information

Application	WB, IHC, ICC
Primary Accession	O95881
Reactivity	Rat
Clonality	Monoclonal
Other Names	
AG1; AGR1; ER protein 18; ER protein 19; ERP 18; ERP16; ERP19; hAG1; hTLP19; PDIA16; TLP19; TXNDC12;	
Isotype	Rabbit IgG
Host	Rabbit
Calculated MW	19206 Da

ERp19 Antibody - Additional Information

Dilution	WB~~1:1000 IHC~~1:100~500 ICC~~N/A
Purification	Affinity-chromatography
Immunogen	A synthesized peptide derived from human ERp19
Description	ERp19 belongs to the thioredoxin superfamily. Members of this superfamily possess a thioredoxin fold with a consensus active-site sequence (CxxC) and have roles in redox regulation, defense against oxidative stress, refolding of disulfide-containing proteins, and regulation of transcription factors.
Storage Condition and Buffer	Rabbit IgG in phosphate buffered saline , pH 7.4, 150mM NaCl, 0.02% sodium azide and 50% glycerol. Store at +4°C short term. Store at -20°C long term. Avoid freeze / thaw cycle.

ERp19 Antibody - Protein Information**Name** TXNDC12 ([HGNC:24626](#))**Function**

Protein-disulfide reductase of the endoplasmic reticulum that promotes disulfide bond formation in client proteins through its thiol- disulfide oxidase activity.

Cellular Location

Endoplasmic reticulum lumen {ECO:0000255|PROSITE- ProRule:PRU10138,
ECO:0000269|PubMed:12761212}

Tissue Location

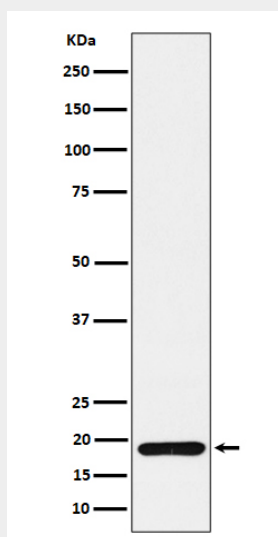
Widely expressed..

ERp19 Antibody - Protocols

Provided below are standard protocols that you may find useful for product applications.

- [Western Blot](#)
- [Blocking Peptides](#)
- [Dot Blot](#)
- [Immunohistochemistry](#)
- [Immunofluorescence](#)
- [Immunoprecipitation](#)
- [Flow Cytometry](#)
- [Cell Culture](#)

ERp19 Antibody - Images



Western blot analysis of ERp19 expression in 293T cell lysate.