

UQCRH Antibody
Rabbit mAb
Catalog # AP92788**Specification**

UQCRH Antibody - Product Information

Application	WB, IHC
Primary Accession	P07919
Reactivity	Rat
Clonality	Monoclonal
Other Names	
QCR6; UQCR8;	
Isotype	Rabbit IgG
Host	Rabbit
Calculated MW	10739 Da

UQCRH Antibody - Additional Information

Dilution	WB~~1:1000 IHC~~1:100~500
Purification	Affinity-chromatography
Immunogen	A synthesized peptide derived from human UQCRH
Description	UQCRH is a component of the ubiquinol-cytochrome c reductase complex (complex III or cytochrome b-c1 complex), which is part of the mitochondrial respiratory chain. It may play a role in electron transfer between cytochromes c1 and c.
Storage Condition and Buffer	Rabbit IgG in phosphate buffered saline , pH 7.4, 150mM NaCl, 0.02% sodium azide and 50% glycerol. Store at +4°C short term. Store at -20°C long term. Avoid freeze / thaw cycle.

UQCRH Antibody - Protein Information**Name** UQCRH**Function**

Component of the ubiquinol-cytochrome c oxidoreductase, a multisubunit transmembrane complex that is part of the mitochondrial electron transport chain which drives oxidative phosphorylation. The respiratory chain contains 3 multisubunit complexes succinate dehydrogenase (complex II, CII), ubiquinol-cytochrome c oxidoreductase (cytochrome b-c1 complex, complex III, CIII) and cytochrome c oxidase (complex IV, CIV), that cooperate to transfer electrons derived from NADH and succinate to molecular oxygen, creating an electrochemical gradient over the inner membrane that drives transmembrane transport and the ATP synthase.

The cytochrome b-c1 complex catalyzes electron transfer from ubiquinol to cytochrome c, linking this redox reaction to translocation of protons across the mitochondrial inner membrane, with protons being carried across the membrane as hydrogens on the quinol. In the process called Q cycle, 2 protons are consumed from the matrix, 4 protons are released into the intermembrane space and 2 electrons are passed to cytochrome c.

Cellular Location

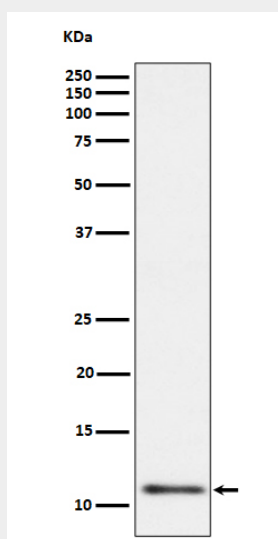
Mitochondrion inner membrane {ECO:0000250|UniProtKB:P00127}; Peripheral membrane protein {ECO:0000250|UniProtKB:P00127}; Intermembrane side {ECO:0000250|UniProtKB:P00127}

UQCRH Antibody - Protocols

Provided below are standard protocols that you may find useful for product applications.

- [Western Blot](#)
- [Blocking Peptides](#)
- [Dot Blot](#)
- [Immunohistochemistry](#)
- [Immunofluorescence](#)
- [Immunoprecipitation](#)
- [Flow Cytometry](#)
- [Cell Culture](#)

UQCRH Antibody - Images



Western blot analysis of UQCRH expression in HL60 cell lysate.