

**SOD2 (acetyl K68) Antibody**  
**Rabbit mAb**  
**Catalog # AP92789****Specification**

---

**SOD2 (acetyl K68) Antibody - Product Information**

Application	WB, IHC
Primary Accession	<a href="#">P04179</a>
Reactivity	Rat
Clonality	Monoclonal
<b>Other Names</b>	
Indophenoloxidase B; IPOB; MNSOD; MVCD6; SOD2;	
Isotype	Rabbit IgG
Host	Rabbit
Calculated MW	24750 Da

**SOD2 (acetyl K68) Antibody - Additional Information**

Dilution	WB~~1:1000 IHC~~1:100~500
Purification	Affinity-chromatography
Immunogen	A synthesized peptide derived from human SOD2 (acetyl K68)
Description	Destroys superoxide anion radicals which are normally produced within the cells and which are toxic to biological systems.
Storage Condition and Buffer	Rabbit IgG in phosphate buffered saline , pH 7.4, 150mM NaCl, 0.02% sodium azide and 50% glycerol. Store at +4°C short term. Store at -20°C long term. Avoid freeze / thaw cycle.

**SOD2 (acetyl K68) Antibody - Protein Information****Name** SOD2**Function**

Destroys superoxide anion radicals which are normally produced within the cells and which are toxic to biological systems.

**Cellular Location**

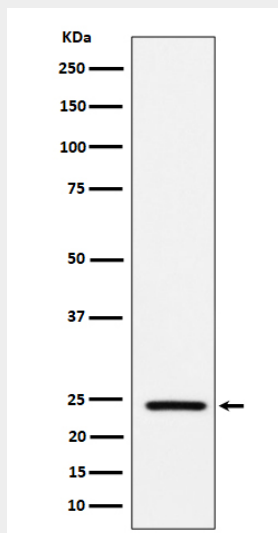
Mitochondrion matrix.

**SOD2 (acetyl K68) Antibody - Protocols**

Provided below are standard protocols that you may find useful for product applications.

- [Western Blot](#)
- [Blocking Peptides](#)
- [Dot Blot](#)
- [Immunohistochemistry](#)
- [Immunofluorescence](#)
- [Immunoprecipitation](#)
- [Flow Cytometry](#)
- [Cell Culture](#)

#### **SOD2 (acetyl K68) Antibody - Images**



Western blot analysis of SOD2 (acetyl K68) expression in mouse heart cell lysate.