

ABCF1 Antibody (C-term)
Affinity Purified Rabbit Polyclonal Antibody (Pab)
Catalog # AP9278b**Specification**

ABCF1 Antibody (C-term) - Product Information

Application	WB, IHC-P-Leica,E
Primary Accession	Q8NE71
Other Accession	Q767L0
Reactivity	Human, Mouse, Rat
Predicted	Pig
Host	Rabbit
Clonality	Polyclonal
Isotype	Rabbit IgG
Antigen Region	687-716

ABCF1 Antibody (C-term) - Additional Information**Gene ID 23****Other Names**

ATP-binding cassette sub-family F member 1, ATP-binding cassette 50, TNF-alpha-stimulated ABC protein, ABCF1, ABC50

Target/Specificity

This ABCF1 antibody is generated from rabbits immunized with a KLH conjugated synthetic peptide between 687-716 amino acids from the C-terminal region of human ABCF1.

Dilution

WB~~1:1000
IHC-P-Leica~~1:500

Format

Purified polyclonal antibody supplied in PBS with 0.09% (W/V) sodium azide. This antibody is purified through a protein A column, followed by peptide affinity purification.

Storage

Maintain refrigerated at 2-8°C for up to 2 weeks. For long term storage store at -20°C in small aliquots to prevent freeze-thaw cycles.

Precautions

ABCF1 Antibody (C-term) is for research use only and not for use in diagnostic or therapeutic procedures.

ABCF1 Antibody (C-term) - Protein Information**Name ABCF1**

Synonyms ABC50

Function Isoform 2 is required for efficient Cap- and IRES-mediated mRNA translation initiation. Isoform 2 is not involved in the ribosome biogenesis.

Cellular Location

[Isoform 2]: Cytoplasm. Nucleus, nucleoplasm. Nucleus envelope

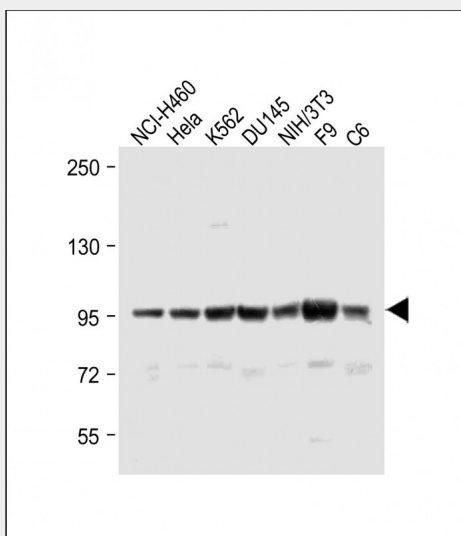
Tissue Location

Ubiquitous..

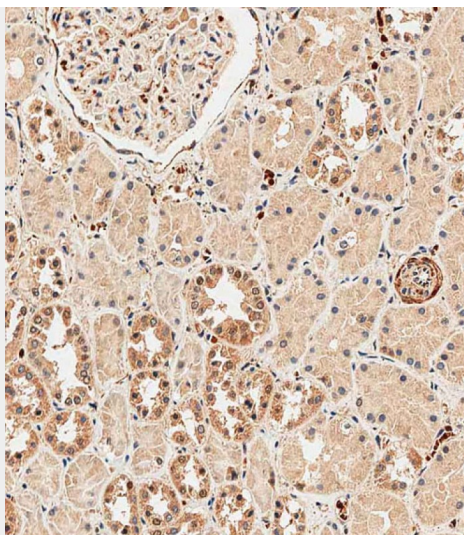
ABCF1 Antibody (C-term) - Protocols

Provided below are standard protocols that you may find useful for product applications.

- [Western Blot](#)
- [Blocking Peptides](#)
- [Dot Blot](#)
- [Immunohistochemistry](#)
- [Immunofluorescence](#)
- [Immunoprecipitation](#)
- [Flow Cytometry](#)
- [Cell Culture](#)

ABCF1 Antibody (C-term) - Images

All lanes : Anti-ABCF1 Antibody (C-term) at 1:1000 dilution Lane 1: NCI-H460 whole cell lysate Lane 2: HeLa whole cell lysate Lane 3: K562 whole cell lysate Lane 4: DU145 whole cell lysate Lane 5: NIH/3T3 whole cell lysate Lane 6: F9 whole cell lysate Lane 7: C6 whole cell lysate Lysates/proteins at 20 µg per lane. Secondary Goat Anti-Rabbit IgG, (H+L), Peroxidase conjugated at 1/10000 dilution. Predicted band size : 96 kDa Blocking/Dilution buffer: 5% NFDM/TBST.



Immunohistochemical analysis of paraffin-embedded human kidney tissue using AP9278B performed on the Leica® BOND RXm. Tissue was fixed with formaldehyde at room temperature, antigen retrieval was by heat mediation with a EDTA buffer (pH9. 0). Samples were incubated with primary antibody(1:500) for 1 hours at room temperature. A undiluted biotinylated CRF Anti-Polyvalent HRP Polymer antibody was used as the secondary antibody.

ABCF1 Antibody (C-term) - Background

The protein is a member of the superfamily of ATP-binding cassette (ABC) transporters. ABC proteins transport various molecules across extra- and intra-cellular membranes. ABC proteins are divided into seven distinct subfamilies (ABC1, MDR/TAP, MRP, ALD, OABP, GCN20, White). This protein is a member of the GCN20 subfamily. Unlike other members of the superfamily, this protein lacks the transmembrane domains which are characteristic of most ABC transporters. This protein may be regulated by tumor necrosis factor-alpha and play a role in enhancement of protein synthesis and the inflammation process.

ABCF1 Antibody (C-term) - References

Barcellos,L.F., et.al., PLoS Genet. 5 (10), E1000696 (2009) Paytubi,S., et.al., J. Biol. Chem. 284 (36), 24061-24073 (2009) Saito,A., et.al., J. Hum. Genet. 54 (6), 317-323 (2009)