

RPL13 Antibody
Rabbit mAb
Catalog # AP92792**Specification**

RPL13 Antibody - Product Information

Application	WB, IHC, ICC
Primary Accession	P26373
Clonality	Monoclonal
Other Names	
BBC1; L13; rpl13;	
Isotype	Rabbit IgG
Host	Rabbit
Calculated MW	24261 Da

RPL13 Antibody - Additional Information

Dilution	WB~~1:1000 IHC~~1:100~500 ICC~~N/A
Purification	Affinity-chromatography
Immunogen	A synthesized peptide derived from human RPL13
Description	Belongs to the ribosomal protein L13e family.
Storage Condition and Buffer	Rabbit IgG in phosphate buffered saline , pH 7.4, 150mM NaCl, 0.02% sodium azide and 50% glycerol. Store at +4°C short term. Store at -20°C long term. Avoid freeze / thaw cycle.

RPL13 Antibody - Protein Information**Name** RPL13**Synonyms** BBC1**Function**

Component of the ribosome, a large ribonucleoprotein complex responsible for the synthesis of proteins in the cell (PubMed: [23636399](http://www.uniprot.org/citations/23636399), PubMed: [31630789](http://www.uniprot.org/citations/31630789), PubMed: [32669547](http://www.uniprot.org/citations/32669547)). The small ribosomal subunit (SSU) binds messenger RNAs (mRNAs) and translates the encoded message by selecting cognate aminoacyl-transfer RNA (tRNA) molecules (Probable). The large subunit (LSU) contains the ribosomal catalytic site termed the peptidyl transferase center (PTC), which catalyzes the formation of peptide bonds, thereby polymerizing the amino acids delivered by tRNAs into a polypeptide chain (Probable). The nascent polypeptides leave the ribosome through a tunnel in the LSU and interact with protein factors that

function in enzymatic processing, targeting, and the membrane insertion of nascent chains at the exit of the ribosomal tunnel (Probable). As part of the LSU, it is probably required for its formation and the maturation of rRNAs (PubMed:31630789). Plays a role in bone development (PubMed:31630789).

Cellular Location

Cytoplasm

Tissue Location

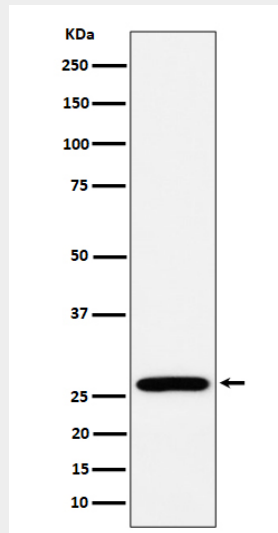
Higher levels of expression in benign breast lesions than in carcinomas.

RPL13 Antibody - Protocols

Provided below are standard protocols that you may find useful for product applications.

- [Western Blot](#)
- [Blocking Peptides](#)
- [Dot Blot](#)
- [Immunohistochemistry](#)
- [Immunofluorescence](#)
- [Immunoprecipitation](#)
- [Flow Cytometry](#)
- [Cell Culture](#)

RPL13 Antibody - Images



Western blot analysis of RPL13 expression in MCF7 cell lysate.