

TRPV5 Antibody
Rabbit mAb
Catalog # AP92795**Specification**

TRPV5 Antibody - Product Information

Application	WB, IHC
Primary Accession	O9NQA5
Reactivity	Rat
Clonality	Monoclonal
Other Names	
CAT2; ECaC; ECaC1; OTRPC3; TrpV5;	
Isotype	Rabbit IgG
Host	Rabbit
Calculated MW	82551 Da

TRPV5 Antibody - Additional Information

Dilution	WB~~1:1000 IHC~~1:100~500
Purification	Affinity-chromatography
Immunogen	A synthesized peptide derived from human TRPV5
Description	Constitutively active calcium selective cation channel thought to be involved in Ca(2+) reabsorption in kidney and intestine.
Storage Condition and Buffer	Rabbit IgG in phosphate buffered saline , pH 7.4, 150mM NaCl, 0.02% sodium azide and 50% glycerol. Store at +4°C short term. Store at -20°C long term. Avoid freeze / thaw cycle.

TRPV5 Antibody - Protein Information**Name** TRPV5**Synonyms** ECAC1 {ECO:0000303|PubMed:10945469}**Function**

Constitutively active calcium selective cation channel thought to be involved in Ca(2+) reabsorption in kidney and intestine (PubMed:[11549322](http://www.uniprot.org/citations/11549322), PubMed:[18768590](http://www.uniprot.org/citations/18768590)). Required for normal Ca(2+) reabsorption in the kidney distal convoluted tubules (By similarity). The channel is activated by low internal calcium level and the current exhibits an inward rectification (PubMed:[11549322](http://www.uniprot.org/citations/11549322), PubMed:[18768590](http://www.uniprot.org/citations/18768590)). A

Ca(2+)-dependent feedback regulation includes fast channel inactivation and slow current decay (By similarity). Heteromeric assembly with TRPV6 seems to modify channel properties. TRPV5-TRPV6 heteromultimeric concatemers exhibit voltage-dependent gating (By similarity).

Cellular Location

Apical cell membrane; Multi-pass membrane protein. Note=Colocalized with S100A10 and ANAX2 along the apical domain of kidney distal tubular cells (By similarity) The expression of the glycosylated form in the cell membrane is increased in the presence of WNK3 (PubMed:18768590) {ECO:0000250|UniProtKB:P69744, ECO:0000269|PubMed:18768590}

Tissue Location

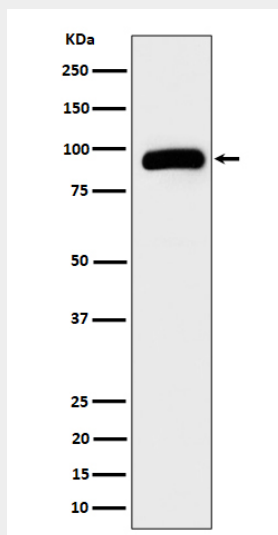
Expressed at high levels in kidney, small intestine and pancreas, and at lower levels in testis, prostate, placenta, brain, colon and rectum.

TRPV5 Antibody - Protocols

Provided below are standard protocols that you may find useful for product applications.

- [Western Blot](#)
- [Blocking Peptides](#)
- [Dot Blot](#)
- [Immunohistochemistry](#)
- [Immunofluorescence](#)
- [Immunoprecipitation](#)
- [Flow Cytometry](#)
- [Cell Culture](#)

TRPV5 Antibody - Images



Western blot analysis of TRPV5 expression in HepG2 cell lysate.