

SNAP29 Antibody
Rabbit mAb
Catalog # AP92796**Specification**

SNAP29 Antibody - Product Information

Application	WB, IP
Primary Accession	O95721
Reactivity	Rat
Clonality	Monoclonal
Other Names	
CEDNIK; SNAP29;	
Isotype	Rabbit IgG
Host	Rabbit
Calculated MW	28970 Da

SNAP29 Antibody - Additional Information

Dilution	WB~~1:1000 IP~~N/A
Purification	Affinity-chromatography
Immunogen	A synthesized peptide derived from human SNAP29
Description	Involved in multiple membrane trafficking steps.
Storage Condition and Buffer	Rabbit IgG in phosphate buffered saline , pH 7.4, 150mM NaCl, 0.02% sodium azide and 50% glycerol. Store at +4°C short term. Store at -20°C long term. Avoid freeze / thaw cycle.

SNAP29 Antibody - Protein Information**Name** SNAP29 ([HGNC:11133](#))**Function**

SNAREs, soluble N-ethylmaleimide-sensitive factor-attachment protein receptors, are essential proteins for fusion of cellular membranes. SNAREs localized on opposing membranes assemble to form a trans-SNARE complex, an extended, parallel four alpha-helical bundle that drives membrane fusion. SNAP29 is a SNARE involved in autophagy through the direct control of autophagosome membrane fusion with the lysosome membrane. Also plays a role in ciliogenesis by regulating membrane fusions.

Cellular Location

Cytoplasm. Golgi apparatus membrane {ECO:0000250|UniProtKB:Q9Z2P6}; Peripheral membrane protein. Cytoplasmic vesicle, autophagosome membrane; Peripheral membrane protein. Cell projection, cilium membrane; Peripheral membrane protein. Note=Appears to be mostly membrane-bound, probably via interaction with syntaxins, but a significant portion is cytoplasmic

Localizes to the ciliary pocket from where the cilium protrudes

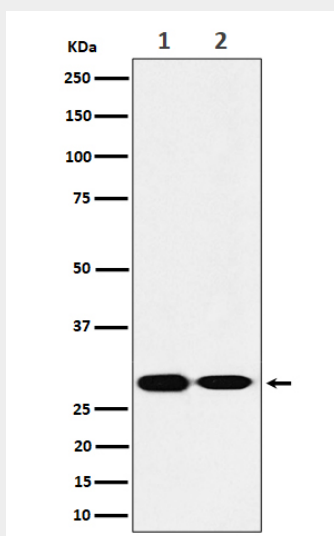
Tissue Location

Found in brain, heart, kidney, liver, lung, placenta, skeletal muscle, spleen and pancreas

SNAP29 Antibody - Protocols

Provided below are standard protocols that you may find useful for product applications.

- [Western Blot](#)
- [Blocking Peptides](#)
- [Dot Blot](#)
- [Immunohistochemistry](#)
- [Immunofluorescence](#)
- [Immunoprecipitation](#)
- [Flow Cytometry](#)
- [Cell Culture](#)

SNAP29 Antibody - Images

Western blot analysis of SNAP29 expression in (1) HeLa cell lysate; (2) Mouse brain lysate.