

ADRA1A Antibody
Rabbit mAb
Catalog # AP92800**Specification**

ADRA1A Antibody - Product Information

| | |
|-------------------------------------|------------------------|
| Application | WB, FC, ICC |
| Primary Accession | P35348 |
| Reactivity | Rat |
| Clonality | Monoclonal |
| Other Names | |
| ADRA1A; Adra1c; ADRA1L1; ALPHA1AAR; | |

| | |
|---------------|------------|
| Isotype | Rabbit IgG |
| Host | Rabbit |
| Calculated MW | 51487 Da |

ADRA1A Antibody - Additional Information

| | |
|------------------------------|------------------------------------------------------------------------------------------------------------------------------------------------------------------------------------------------------------|
| Dilution | WB~~1:1000 FC~~1:10~50 ICC~~N/A |
| Purification | Affinity-chromatography |
| Immunogen | A synthesized peptide derived from human ADRA1A |
| Description | This alpha-adrenergic receptor mediates its action by association with G proteins that activate a phosphatidylinositol-calcium second messenger system. Its effect is mediated by G(q) and G(11) proteins. |
| Storage Condition and Buffer | Rabbit IgG in phosphate buffered saline , pH 7.4, 150mM NaCl, 0.02% sodium azide and 50% glycerol. Store at +4°C short term. Store at -20°C long term. Avoid freeze / thaw cycle. |

ADRA1A Antibody - Protein Information**Name** ADRA1A**Synonyms** ADRA1C**Function**

This alpha-adrenergic receptor mediates its action by association with G proteins that activate a phosphatidylinositol- calcium second messenger system. Its effect is mediated by G(q) and G(11) proteins. Nuclear ADRA1A-ADRA1B heterooligomers regulate phenylephrine(PE)-stimulated ERK signaling in cardiac myocytes.

Cellular Location

Nucleus membrane; Multi-pass membrane protein. Cell membrane; Multi-pass membrane protein. Cytoplasm Membrane, caveola. Note=Location at the nuclear membrane facilitates heterooligomerization and regulates ERK- mediated signaling in cardiac myocytes. Colocalizes with GNAQ, PLCB1 as well as LAP2 at the nuclear membrane of cardiac myocytes

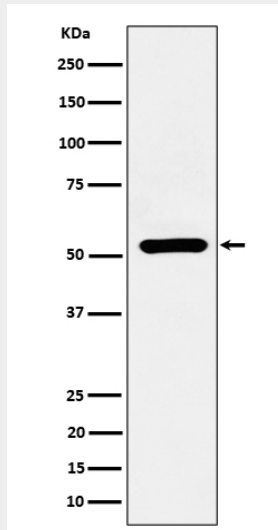
Tissue Location

Expressed in heart, brain, liver and prostate, but not in kidney, lung, adrenal, aorta and pituitary. Within the prostate, expressed in the apex, base, periurethral and lateral lobe. Isoform 4 is the most abundant isoform expressed in the prostate with high levels also detected in liver and heart.

ADRA1A Antibody - Protocols

Provided below are standard protocols that you may find useful for product applications.

- [Western Blot](#)
- [Blocking Peptides](#)
- [Dot Blot](#)
- [Immunohistochemistry](#)
- [Immunofluorescence](#)
- [Immunoprecipitation](#)
- [Flow Cytometry](#)
- [Cell Culture](#)

ADRA1A Antibody - Images

Western blot analysis of ADRA1A expression in HepG2 cell lysate.