

Calumenin Antibody
Rabbit mAb
Catalog # AP92802**Specification**

Calumenin Antibody - Product Information

Application	WB, IHC
Primary Accession	O43852
Reactivity	Rat
Clonality	Monoclonal
Other Names	
CALU; Calumenin 1; Calumenin 2; Calumenin; Crocalbin;	
Isotype	Rabbit IgG
Host	Rabbit
Calculated MW	37107 Da

Calumenin Antibody - Additional Information

Dilution	WB~~1:1000 IHC~~1:100~500
Purification	Affinity-chromatography
Immunogen	A synthesized peptide derived from human Calumenin
Description	Involved in regulation of vitamin K-dependent carboxylation of multiple amino-terminal glutamate residues. Seems to inhibit gamma-carboxylase GGCX. Binds 7 calcium ions with a low affinity.
Storage Condition and Buffer	Rabbit IgG in phosphate buffered saline , pH 7.4, 150mM NaCl, 0.02% sodium azide and 50% glycerol. Store at +4°C short term. Store at -20°C long term. Avoid freeze / thaw cycle.

Calumenin Antibody - Protein Information**Name** CALU**Function**

Involved in regulation of vitamin K-dependent carboxylation of multiple N-terminal glutamate residues. Seems to inhibit gamma- carboxylase GGCX. Binds 7 calcium ions with a low affinity (By similarity).

Cellular Location

Endoplasmic reticulum membrane. Golgi apparatus. Secreted. Melanosome. Sarcoplasmic reticulum lumen. Note=Identified by mass spectrometry in melanosome fractions from stage I to stage IV.

Tissue Location

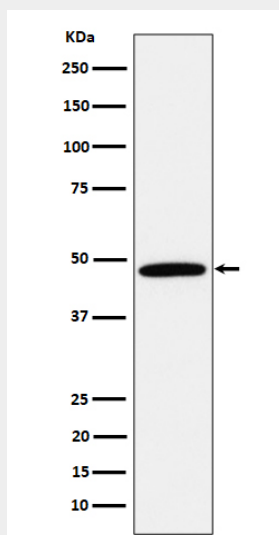
Ubiquitously expressed. Expressed at high levels in heart, placenta and skeletal muscle, at lower levels in lung, kidney and pancreas and at very low levels in brain and liver

Calumenin Antibody - Protocols

Provided below are standard protocols that you may find useful for product applications.

- [Western Blot](#)
- [Blocking Peptides](#)
- [Dot Blot](#)
- [Immunohistochemistry](#)
- [Immunofluorescence](#)
- [Immunoprecipitation](#)
- [Flow Cytometry](#)
- [Cell Culture](#)

Calumenin Antibody - Images



Western blot analysis of Calumenin expression in 293T cell lysate.