

PCBD1 Antibody
Rabbit mAb
Catalog # AP92808**Specification**

PCBD1 Antibody - Product Information

Application	WB, IHC
Primary Accession	P61457
Reactivity	Rat
Clonality	Monoclonal
Other Names	
DCoH; PCBD; PCBD1; PCD; PHS;	
Isotype	Rabbit IgG
Host	Rabbit
Calculated MW	12000 Da

PCBD1 Antibody - Additional Information

Dilution	WB~~1:1000 IHC~~1:100~500
Purification	Affinity-chromatography
Immunogen	A synthesized peptide derived from human PCBD1
Description	Involved in tetrahydrobiopterin biosynthesis. Seems to both prevent the formation of 7-pterins and accelerate the formation of quinonoid-BH2. Coactivator for HNF1A-dependent transcription.
Storage Condition and Buffer	Rabbit IgG in phosphate buffered saline , pH 7.4, 150mM NaCl, 0.02% sodium azide and 50% glycerol. Store at +4°C short term. Store at -20°C long term. Avoid freeze / thaw cycle.

PCBD1 Antibody - Protein Information**Name** PCBD1**Synonyms** DCOH, PCBD**Function**

Involved in tetrahydrobiopterin biosynthesis (By similarity). Seems to both prevent the formation of 7-pterins and accelerate the formation of quinonoid-BH2. Coactivator for HNF1A-dependent transcription (By similarity). Regulates the dimerization of homeodomain protein HNF1A and enhances its transcriptional activity (By similarity). Also acts as a coactivator for HNF1B-dependent transcription (PubMed: <http://www.uniprot.org/citations/24204001> target="_blank">24204001).

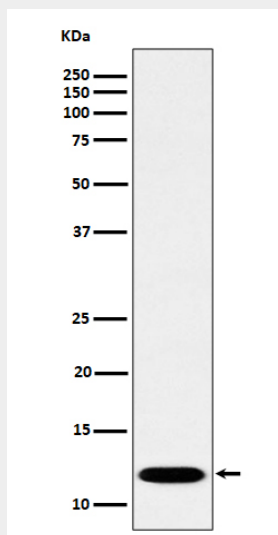
Cellular Location

Cytoplasm. Nucleus. Note=Recruited to the nucleus through the interaction with HNF1B.

PCBD1 Antibody - Protocols

Provided below are standard protocols that you may find useful for product applications.

- [Western Blot](#)
- [Blocking Peptides](#)
- [Dot Blot](#)
- [Immunohistochemistry](#)
- [Immunofluorescence](#)
- [Immunoprecipitation](#)
- [Flow Cytometry](#)
- [Cell Culture](#)

PCBD1 Antibody - Images

Western blot analysis of PCBD1 expression in Caco-2 cell lysate.