

Sterol carrier protein 2 Antibody
Rabbit mAb
Catalog # AP92809**Specification****Sterol carrier protein 2 Antibody - Product Information**

Application	WB, IHC, ICC
Primary Accession	P22307
Reactivity	Rat
Clonality	Monoclonal
Other Names	
NLTP; SCP2; SCPchi; SCPX;	
Isotype	Rabbit IgG
Host	Rabbit
Calculated MW	58994 Da

Sterol carrier protein 2 Antibody - Additional Information

Dilution	WB~~1:1000 IHC~~1:100~500 ICC~~N/A
Purification	Affinity-chromatography
Immunogen	A synthesized peptide derived from human Sterol carrier protein 2
Description	Mediates in vitro the transfer of all common phospholipids, cholesterol and gangliosides between membranes. May play a role in regulating steroidogenesis.
Storage Condition and Buffer	Rabbit IgG in phosphate buffered saline , pH 7.4, 150mM NaCl, 0.02% sodium azide and 50% glycerol. Store at +4°C short term. Store at -20°C long term. Avoid freeze / thaw cycle.

Sterol carrier protein 2 Antibody - Protein Information**Name** SCP2 ([HGNC:10606](#))**Function**

[Isoform SCPx]: Plays a crucial role in the peroxisomal oxidation of branched-chain fatty acids (PubMed:10706581). Catalyzes the last step of the peroxisomal beta-oxidation of branched chain fatty acids and the side chain of the bile acid intermediates di- and trihydroxycoprostanic acids (DHCA and THCA) (PubMed:10706581). Also active with medium and long straight chain 3-oxoacyl-CoAs. Stimulates the microsomal conversion of 7-dehydrocholesterol to cholesterol and transfers phosphatidylcholine and 7-dehydrocholesterol between membranes, in vitro (By similarity). Isoforms SCP2 and SCPx cooperate in peroxisomal oxidation of certain naturally occurring tetramethyl- branched fatty

acyl-CoAs (By similarity).

Cellular Location

[Isoform SCP2]: Peroxisome {ECO:0000250|UniProtKB:P32020}. Cytoplasm. Mitochondrion. Endoplasmic reticulum {ECO:0000250|UniProtKB:P32020}. Mitochondrion {ECO:0000250|UniProtKB:P32020}

Tissue Location

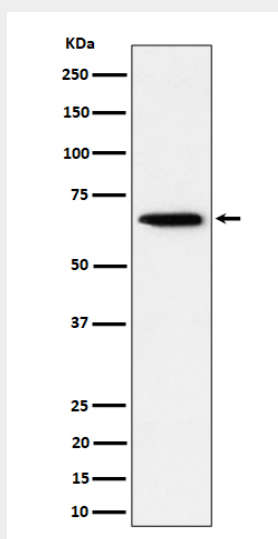
Liver, fibroblasts, and placenta.

Sterol carrier protein 2 Antibody - Protocols

Provided below are standard protocols that you may find useful for product applications.

- [Western Blot](#)
- [Blocking Peptides](#)
- [Dot Blot](#)
- [Immunohistochemistry](#)
- [Immunofluorescence](#)
- [Immunoprecipitation](#)
- [Flow Cytometry](#)
- [Cell Culture](#)

Sterol carrier protein 2 Antibody - Images



Western blot analysis of Sterol carrier protein 2 expression in HepG2 cell lysate.