

ALS2CR1 Antibody
Rabbit mAb
Catalog # AP92812**Specification**

ALS2CR1 Antibody - Product Information

Application	WB, ICC
Primary Accession	Q9GZT8
Clonality	Monoclonal
Other Names	
ALS2CR1; Nif3l1;	
Isotype	Rabbit IgG
Host	Rabbit
Calculated MW	41968 Da

ALS2CR1 Antibody - Additional Information

Dilution	WB~~1:1000 ICC~~N/A
Purification	Affinity-chromatography
Immunogen	A synthesized peptide derived from human ALS2CR1
Description	May function as a transcriptional corepressor through its interaction with COPS2, negatively regulating the expression of genes involved in neuronal differentiation.
Storage Condition and Buffer	Rabbit IgG in phosphate buffered saline , pH 7.4, 150mM NaCl, 0.02% sodium azide and 50% glycerol. Store at +4°C short term. Store at -20°C long term. Avoid freeze / thaw cycle.

ALS2CR1 Antibody - Protein Information**Name** NIF3L1 ([HGNC:13390](#))**Function**

May function as a transcriptional corepressor through its interaction with COPS2, negatively regulating the expression of genes involved in neuronal differentiation.

Cellular Location

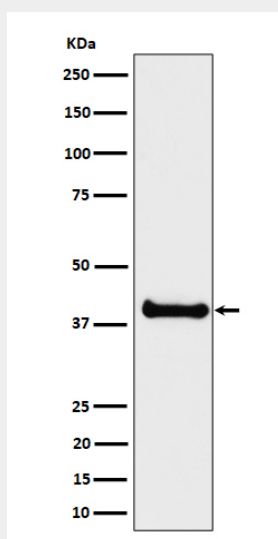
Cytoplasm. Nucleus {ECO:0000250|UniProtKB:Q9EQ80} Note=Interaction with COPS2 may regulate localization to the nucleus {ECO:0000250|UniProtKB:Q9EQ80}

ALS2CR1 Antibody - Protocols

Provided below are standard protocols that you may find useful for product applications.

- [Western Blot](#)
- [Blocking Peptides](#)
- [Dot Blot](#)
- [Immunohistochemistry](#)
- [Immunofluorescence](#)
- [Immunoprecipitation](#)
- [Flow Cytometry](#)
- [Cell Culture](#)

ALS2CR1 Antibody - Images



Western blot analysis of ALS2CR1 expression in LNCaP cell lysate.