

P2Y12 Antibody
Rabbit mAb
Catalog # AP92821**Specification**

P2Y12 Antibody - Product Information

Application	WB, IP
Primary Accession	<u>O9H244</u>
Reactivity	Rat
Clonality	Monoclonal

Other Names

ADP glucose receptor; ADPGR; BDPLT8; HORK3; P2RY12; P2Y purinoceptor 12; P2Y12; P2Y12 platelet ADP receptor; Platelet ADP receptor; Purinergic receptor P2RY12; Purinergic receptor P2Y12; SP1999;

Isotype	Rabbit IgG
Host	Rabbit
Calculated MW	39439 Da

P2Y12 Antibody - Additional Information

Purification	Affinity-chromatography
Immunogen	A synthesized peptide derived from human P2Y12
Description	Receptor for ADP and ATP coupled to G-proteins that inhibit the adenylyl cyclase second messenger system. Not activated by UDP and UTP. Involved in platelets aggregation.
Storage Condition and Buffer	Rabbit IgG in phosphate buffered saline , pH 7.4, 150mM NaCl, 0.02% sodium azide and 50% glycerol. Store at +4°C short term. Store at -20°C long term. Avoid freeze / thaw cycle.

P2Y12 Antibody - Protein Information**Name** P2RY12**Synonyms** HORK3**Function**

Receptor for ADP and ATP coupled to G-proteins that inhibit the adenylyl cyclase second messenger system. Not activated by UDP and UTP. Required for normal platelet aggregation and blood coagulation.

Cellular Location

Cell membrane; Multi-pass membrane protein

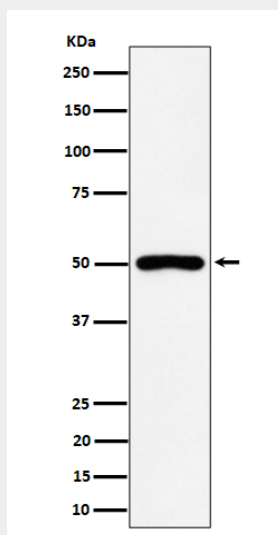
Tissue Location

Highly expressed in the platelets, lower levels in the brain. Lowest levels in the lung, appendix, pituitary and adrenal gland. Expressed in the spinal cord and in the fetal brain

P2Y12 Antibody - Protocols

Provided below are standard protocols that you may find useful for product applications.

- [Western Blot](#)
- [Blocking Peptides](#)
- [Dot Blot](#)
- [Immunohistochemistry](#)
- [Immunofluorescence](#)
- [Immunoprecipitation](#)
- [Flow Cytometry](#)
- [Cell Culture](#)

P2Y12 Antibody - Images

Western blot analysis of P2Y12 expression in RAW 264.7 cell lysate.