

HIF Prolyl Hydroxylases Antibody
Rabbit mAb
Catalog # AP92826**Specification**

HIF Prolyl Hydroxylases Antibody - Product Information

Application	WB, IHC, FC, IP
Primary Accession	Q9NXG6
Clonality	Monoclonal

Other Names

EGLN4 ; HIFPH4; Hypoxia inducible factor prolyl 4 hydroxylase; P4H with transmembrane domain; P4htm; PH4; PHD4; Proline 4 hydroxylase; Prolyl hydroxylase domain containing 4;

Isotype	Rabbit IgG
Host	Rabbit
Calculated MW	56661 Da

HIF Prolyl Hydroxylases Antibody - Additional Information

Dilution	WB~~1:1000 IHC~~1:100~500 FC~~1:10~50 IP~~N/A
Purification	Affinity-chromatography
Immunogen	A synthesized peptide derived from human HIF Prolyl Hydroxylases
Description	Catalyzes the post-translational formation of 4-hydroxyproline in hypoxia-inducible factor (HIF) alpha proteins. Hydroxylates HIF1A at 'Pro-402' and 'Pro-564'. May function as a cellular oxygen sensor and, under normoxic conditions, may target HIF through the hydroxylation for proteasomal degradation via the von Hippel-Lindau ubiquitination complex.
Storage Condition and Buffer	Rabbit IgG in phosphate buffered saline , pH 7.4, 150mM NaCl, 0.02% sodium azide and 50% glycerol. Store at +4°C short term. Store at -20°C long term. Avoid freeze / thaw cycle.

HIF Prolyl Hydroxylases Antibody - Protein Information**Name** P4HTM**Synonyms** PH4**Function**

Catalyzes the post-translational formation of 4- hydroxyproline in hypoxia-inducible factor (HIF)

alpha proteins. Hydroxylates HIF1A at 'Pro-402' and 'Pro-564'. May function as a cellular oxygen sensor and, under normoxic conditions, may target HIF through the hydroxylation for proteasomal degradation via the von Hippel-Lindau ubiquitination complex.

Cellular Location

Endoplasmic reticulum membrane; Single-pass type II membrane protein

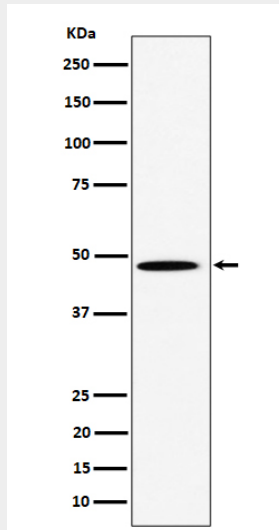
Tissue Location

Widely expressed with highest levels in adult pancreas, heart, skeletal muscle, brain, placenta, kidney and adrenal gland. Expressed at lower levels in epiphyseal cartilage and in fibroblasts.

HIF Prolyl Hydroxylases Antibody - Protocols

Provided below are standard protocols that you may find useful for product applications.

- [Western Blot](#)
- [Blocking Peptides](#)
- [Dot Blot](#)
- [Immunohistochemistry](#)
- [Immunofluorescence](#)
- [Immunoprecipitation](#)
- [Flow Cytometry](#)
- [Cell Culture](#)

HIF Prolyl Hydroxylases Antibody - Images

Western blot analysis of HIF Prolyl Hydroxylases expression in HeLa cell lysate.