

**Adiponectin Antibody**  
**Rabbit mAb**  
**Catalog # AP92840****Specification**

---

**Adiponectin Antibody - Product Information**

Application	<b>WB</b>
Primary Accession	<a href="#"><b>Q15848</b></a>
Reactivity	<b>Rat</b>
Clonality	<b>Monoclonal</b>

**Other Names**

30 kDa adipocyte complement related protein; ACDC; ACRP30; Adipocyte; Adiponectin; Adipoq; Adipose most abundant gene transcript 1; Adipose specific collagen like factor; ADIPQTL1; ADPN; APM1; GBP28; Gelatin binding protein; Gelatin binding protein 28;

Isotype	<b>Rabbit IgG</b>
Host	<b>Rabbit</b>
Calculated MW	<b>26414 Da</b>

**Adiponectin Antibody - Additional Information**

Dilution	<b>WB~~1:1000</b>
Purification	<b>Affinity-chromatography</b>
Immunogen	<b>A synthesized peptide derived from human Adiponectin</b>
Description	<b>Important adipokine involved in the control of fat metabolism and insulin sensitivity, with direct anti-diabetic, anti-atherogenic and anti-inflammatory activities. Stimulates AMPK phosphorylation and activation in the liver and the skeletal muscle, enhancing glucose utilization and fatty-acid combustion.</b>
Storage Condition and Buffer	<b>Rabbit IgG in phosphate buffered saline , pH 7.4, 150mM NaCl, 0.02% sodium azide and 50% glycerol. Store at +4°C short term. Store at -20°C long term. Avoid freeze / thaw cycle.</b>

**Adiponectin Antibody - Protein Information****Name** ADIPOQ**Function**

Important adipokine involved in the control of fat metabolism and insulin sensitivity, with direct anti-diabetic, anti-atherogenic and anti-inflammatory activities. Stimulates AMPK phosphorylation and activation in the liver and the skeletal muscle, enhancing glucose utilization and fatty-acid combustion. Antagonizes TNF-alpha by negatively regulating its expression in various tissues such as liver and macrophages, and also by counteracting its effects. Inhibits endothelial NF-kappa-B

signaling through a cAMP-dependent pathway. May play a role in cell growth, angiogenesis and tissue remodeling by binding and sequestering various growth factors with distinct binding affinities, depending on the type of complex, LMW, MMW or HMW.

**Cellular Location**

Secreted.

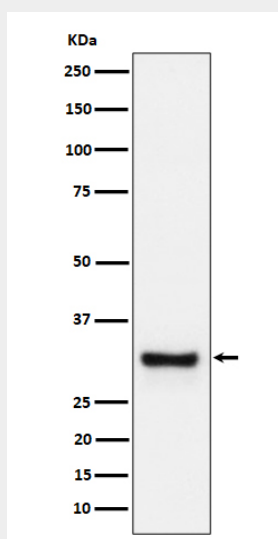
**Tissue Location**

Synthesized exclusively by adipocytes and secreted into plasma.

**Adiponectin Antibody - Protocols**

Provided below are standard protocols that you may find useful for product applications.

- [Western Blot](#)
- [Blocking Peptides](#)
- [Dot Blot](#)
- [Immunohistochemistry](#)
- [Immunofluorescence](#)
- [Immunoprecipitation](#)
- [Flow Cytometry](#)
- [Cell Culture](#)

**Adiponectin Antibody - Images**

Western blot analysis of Adiponectin expression in human plasma cell lysate.