

**CLPX Antibody**  
**Rabbit mAb**  
**Catalog # AP92842****Specification**

---

**CLPX Antibody - Product Information**

Application	WB, ICC
Primary Accession	<a href="#">O76031</a>
Reactivity	Rat
Clonality	Monoclonal

**Other Names**

ATP dependent Clp protease ATP binding subunit clpX like, mitochondrial; Caseinolytic protease X; clpX; ClpX caseinolytic peptidase X homolog;

Isotype	Rabbit IgG
Host	Rabbit
Calculated MW	69224 Da

**CLPX Antibody - Additional Information**

Dilution	WB~~1:1000 ICC~~N/A
Purification	Affinity-chromatography
Immunogen	A synthesized peptide derived from human CLPX
Description	ATP-dependent specificity component of the Clp protease. It directs the protease to specific substrates. Can perform chaperone functions in the absence of clpP.
Storage Condition and Buffer	Rabbit IgG in phosphate buffered saline , pH 7.4, 150mM NaCl, 0.02% sodium azide and 50% glycerol. Store at +4°C short term. Store at -20°C long term. Avoid freeze / thaw cycle.

**CLPX Antibody - Protein Information**

**Name** CLPX ([HGNC:2088](#))

**Function**

ATP-dependent chaperone that functions as an unfoldase. As part of the ClpXP protease complex, it recognizes specific protein substrates, unfolds them using energy derived from ATP hydrolysis, and then translocates them to the proteolytic subunit (CLPP) of the ClpXP complex for degradation (PubMed: [11923310](http://www.uniprot.org/citations/11923310), PubMed: [22710082](http://www.uniprot.org/citations/22710082), PubMed: [28874591](http://www.uniprot.org/citations/28874591)). Thanks to its chaperone activity, it also functions in the incorporation of the pyridoxal phosphate cofactor into 5- aminolevulinate synthase, thereby activating 5-aminolevulinate (ALA) synthesis,

the first step in heme biosynthesis (PubMed:<a href="http://www.uniprot.org/citations/28874591" target="\_blank">28874591</a>). This chaperone is also involved in the control of mtDNA nucleoid distribution, by regulating mitochondrial transcription factor A (TFAM) activity (PubMed:<a href="http://www.uniprot.org/citations/22841477" target="\_blank">22841477</a>).

#### **Cellular Location**

Mitochondrion. Mitochondrion matrix, mitochondrion nucleoid

#### **Tissue Location**

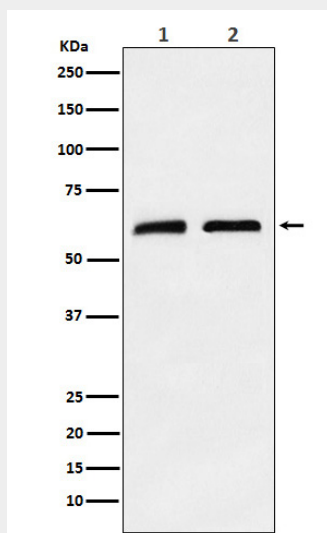
Higher expression in skeletal muscle and heart and to a lesser extent in liver, brain, placenta, lung, kidney and pancreas.

### **CLPX Antibody - Protocols**

Provided below are standard protocols that you may find useful for product applications.

- [Western Blot](#)
- [Blocking Peptides](#)
- [Dot Blot](#)
- [Immunohistochemistry](#)
- [Immunofluorescence](#)
- [Immunoprecipitation](#)
- [Flow Cytometry](#)
- [Cell Culture](#)

### **CLPX Antibody - Images**



Western blot analysis of CLPX expression in (1) A673 cell lysate; (2) Mouse brain lysate.