

p60 katanin Antibody
Rabbit mAb
Catalog # AP92849**Specification**

p60 katanin Antibody - Product Information

Application	WB, ICC
Primary Accession	O75449
Clonality	Monoclonal
Other Names	
Katanin p60 ATPase containing subunit A1; Katanin p60 subunit A1; KATNA1; p60 katanin;	
Isotype	Rabbit IgG
Host	Rabbit
Calculated MW	55965 Da

p60 katanin Antibody - Additional Information

Dilution	WB~~1:1000 ICC~~N/A
Purification	Affinity-chromatography
Immunogen	A synthesized peptide derived from human p60 katanin
Description	Severs microtubules in vitro in an ATP-dependent manner. This activity may promote rapid reorganization of cellular microtubule arrays, such as during disassembly of interphase microtubules at the G2-M transition.
Storage Condition and Buffer	Rabbit IgG in phosphate buffered saline , pH 7.4, 150mM NaCl, 0.02% sodium azide and 50% glycerol. Store at +4°C short term. Store at -20°C long term. Avoid freeze / thaw cycle.

p60 katanin Antibody - Protein Information**Name** KATNA1 {ECO:0000255|HAMAP-Rule:MF_03023}**Function**

Catalytic subunit of a complex which severs microtubules in an ATP-dependent manner. Microtubule severing may promote rapid reorganization of cellular microtubule arrays and the release of microtubules from the centrosome following nucleation. Microtubule release from the mitotic spindle poles may allow depolymerization of the microtubule end proximal to the spindle pole, leading to poleward microtubule flux and poleward motion of chromosome. Microtubule release within the cell body of neurons may be required for their transport into neuronal processes by microtubule-dependent motor proteins. This transport is required for axonal growth.

Cellular Location

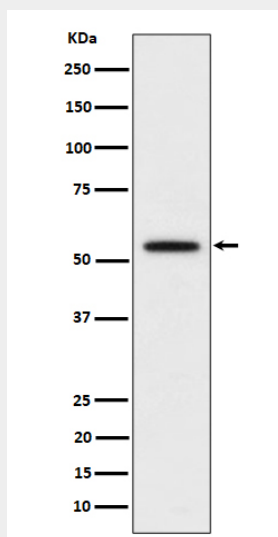
Cytoplasm. Midbody. Cytoplasm, cytoskeleton, microtubule organizing center, centrosome {ECO:0000255|HAMAP-Rule:MF_03023} Cytoplasm, cytoskeleton, spindle pole. Cytoplasm, cytoskeleton, spindle. Note=Predominantly cytoplasmic (PubMed:9658175). Localized diffusely in the cytoplasm during the interphase (PubMed:10751153). During metaphase is localized throughout the cell and more widely dispersed than the microtubules. In anaphase and telophase is localized at the midbody region (PubMed:19261606). Also localized to the interphase centrosome and the mitotic spindle poles (By similarity). Enhanced recruitment to the mitotic spindle poles requires microtubules and interaction with KATNB1 (PubMed:10751153). Localizes within the cytoplasm, partially overlapping with microtubules, in interphase and to the mitotic spindle and spindle poles during mitosis (PubMed:26929214). {ECO:0000255|HAMAP-Rule:MF_03023, ECO:0000269|PubMed:10751153, ECO:0000269|PubMed:19261606, ECO:0000269|PubMed:26929214, ECO:0000269|PubMed:9658175}

p60 katanin Antibody - Protocols

Provided below are standard protocols that you may find useful for product applications.

- [Western Blot](#)
- [Blocking Peptides](#)
- [Dot Blot](#)
- [Immunohistochemistry](#)
- [Immunofluorescence](#)
- [Immunoprecipitation](#)
- [Flow Cytometry](#)
- [Cell Culture](#)

p60 katanin Antibody - Images



Western blot analysis of p60 katanin expression in HeLa cell lysate.