

GRK6 Antibody
Rabbit mAb
Catalog # AP92851**Specification**

GRK6 Antibody - Product InformationApplication
Primary Accession
Clonality**WB**
[P43250](#)
Monoclonal**Other Names**

G protein coupled receptor kinase 6; G protein coupled receptor kinase GRK6; G protein-coupled receptor kinase 6; Gprk6; Grk6;

Isotype
Host
Calculated MW**Rabbit IgG**
Rabbit
65991 Da**GRK6 Antibody - Additional Information**Dilution
Purification
Immunogen**WB~~1:1000**
Affinity-chromatography
A synthesized peptide derived from human GRK6

Description

Specifically phosphorylates the activated forms of G protein-coupled receptors. Rabbit IgG in phosphate buffered saline , pH 7.4, 150mM NaCl, 0.02% sodium azide and 50% glycerol. Store at +4°C short term. Store at -20°C long term. Avoid freeze / thaw cycle.

Storage Condition and Buffer

GRK6 Antibody - Protein Information**Name** GRK6**Synonyms** GPRK6**Function**

Specifically phosphorylates the activated forms of G protein- coupled receptors. Such receptor phosphorylation initiates beta- arrestin-mediated receptor desensitization, internalization, and signaling events leading to their desensitization. Seems to be involved in the desensitization of D2-like dopamine receptors in striatum and chemokine receptor CXCR4 which is critical for CXCL12-induced cell chemotaxis (By similarity). Phosphorylates rhodopsin (RHO) (in vitro) and a non G-protein-coupled receptor: LRP6 during Wnt signaling (in vitro).

Cellular Location

Membrane; Lipid-anchor.

Tissue Location

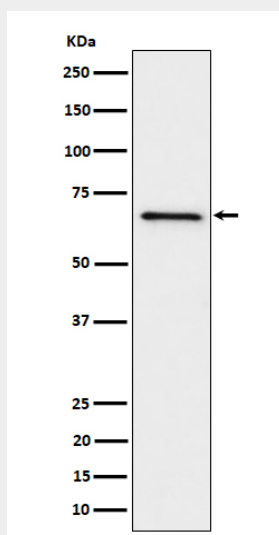
Widely expressed..

GRK6 Antibody - Protocols

Provided below are standard protocols that you may find useful for product applications.

- [Western Blot](#)
- [Blocking Peptides](#)
- [Dot Blot](#)
- [Immunohistochemistry](#)
- [Immunofluorescence](#)
- [Immunoprecipitation](#)
- [Flow Cytometry](#)
- [Cell Culture](#)

GRK6 Antibody - Images



Western blot analysis of GRK6 expression in Ramos cell lysate.