

SLP2 Antibody
Rabbit mAb
Catalog # AP92860

Specification

SLP2 Antibody - Product Information

Application	WB, FC, ICC, IP
Primary Accession	O9UJZ1
Reactivity	Rat
Clonality	Monoclonal

Other Names

EPB72 like protein 2; HSPC108; Paraprotein target 7; Paratarg 7; SLP2; Stomatin (EPB72) like 2; Stomatin like 2; Stomatin like protein 2; Stomatin-like protein 2; STOML2;

Isotype	Rabbit IgG
Host	Rabbit
Calculated MW	38534 Da

SLP2 Antibody - Additional Information

Dilution	WB~~1:1000 FC~~1:10~50 ICC~~N/A IP~~N/A
Purification	Affinity-chromatography
Immunogen	A synthesized peptide derived from human SLP2
Description	Probably regulates the biogenesis and the activity of mitochondria. Stimulates cardiolipin biosynthesis, binds cardiolipin-enriched membranes where it recruits and stabilizes some proteins including prohibitin and may therefore act in the organization of functional microdomains in mitochondrial membranes.
Storage Condition and Buffer	Rabbit IgG in phosphate buffered saline , pH 7.4, 150mM NaCl, 0.02% sodium azide and 50% glycerol. Store at +4°C short term. Store at -20°C long term. Avoid freeze / thaw cycle.

SLP2 Antibody - Protein Information

Name STOML2

Synonyms SLP2

Function

Mitochondrial protein that probably regulates the biogenesis and the activity of mitochondria. Stimulates cardiolipin biosynthesis, binds cardiolipin-enriched membranes where it recruits and stabilizes some proteins including prohibitin and may therefore act in the organization of functional microdomains in mitochondrial membranes. Through regulation of the mitochondrial function may play a role into several biological processes including cell migration, cell proliferation, T-cell activation, calcium homeostasis and cellular response to stress. May play a role in calcium homeostasis through negative regulation of calcium efflux from mitochondria. Required for mitochondrial hyperfusion a pro-survival cellular response to stress which results in increased ATP production by mitochondria. May also regulate the organization of functional domains at the plasma membrane and play a role in T-cell activation through association with the T- cell receptor signaling complex and its regulation.

Cellular Location

Cell membrane; Peripheral membrane protein. Mitochondrion. Mitochondrion inner membrane; Lipid-anchor. Mitochondrion intermembrane space. Membrane raft. Cytoplasm, cytoskeleton
Note=Behaves as an integral membrane protein of the mitochondrion despite the absence of a detectable transmembrane domain (PubMed:21746876). Also associates with the actin cytoskeleton and membrane rafts in activated T-cells (PubMed:10713127, PubMed:18641330) A minor pool is associated with the plasma membrane and is enriched at the immunological synapse in activated T-cells (PubMed:22623988)

Tissue Location

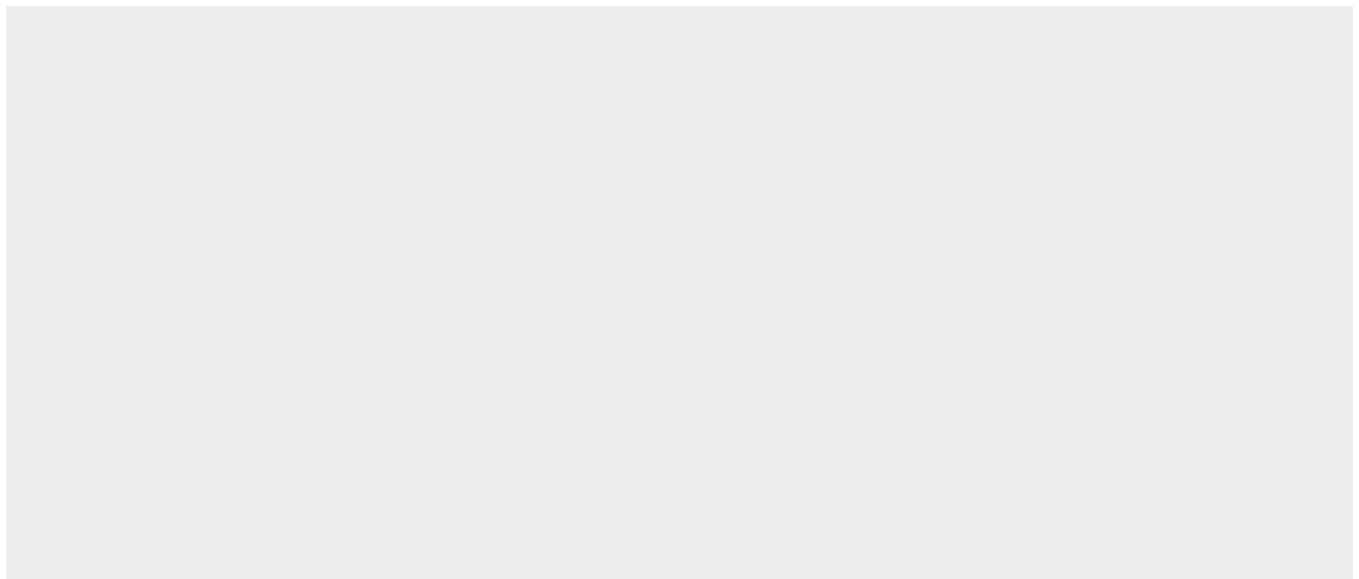
Ubiquitously expressed at low levels. Expressed in lymphoid tissues (at protein level).

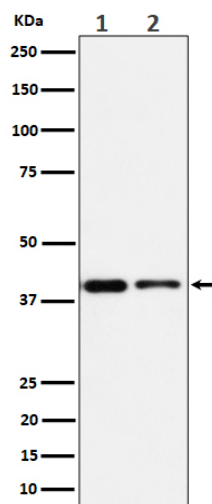
SLP2 Antibody - Protocols

Provided below are standard protocols that you may find useful for product applications.

- [Western Blot](#)
- [Blocking Peptides](#)
- [Dot Blot](#)
- [Immunohistochemistry](#)
- [Immunofluorescence](#)
- [Immunoprecipitation](#)
- [Flow Cytometry](#)
- [Cell Culture](#)

SLP2 Antibody - Images





Western blot analysis of SLP2 expression in (1) Jurkat cell lysate; (2) RAW 264.7 cell lysate.