

Ube2L3 / UBC7 Antibody
Rabbit mAb
Catalog # AP92866**Specification**

Ube2L3 / UBC7 Antibody - Product Information

Application	WB, IHC, ICC
Primary Accession	P68036
Reactivity	Rat
Clonality	Monoclonal
Other Names	
UBCE7; Ubch7; UbcM4; Ube2l3;	
Isotype	Rabbit IgG
Host	Rabbit
Calculated MW	17862 Da

Ube2L3 / UBC7 Antibody - Additional Information

Dilution	WB~~1:1000 IHC~~1:100~500 ICC~~N/A
Purification	Affinity-chromatography
Immunogen	A synthesized peptide derived from human Ube2L3 / UBC7
Description	Accepts ubiquitin from the E1 complex and catalyzes its covalent attachment to other proteins. In vitro catalyzes 'Lys-11'-linked polyubiquitination. Involved in the selective degradation of short-lived and abnormal proteins. Down-regulated during the S-phase it is involved in progression through the cell cycle. Regulates nuclear hormone receptors transcriptional activity. May play a role in myelopoiesis.
Storage Condition and Buffer	Rabbit IgG in phosphate buffered saline , pH 7.4, 150mM NaCl, 0.02% sodium azide and 50% glycerol. Store at +4°C short term. Store at -20°C long term. Avoid freeze / thaw cycle.

Ube2L3 / UBC7 Antibody - Protein Information**Name** UBE2L3**Synonyms** UBCE7, UBC7**Function**

Ubiquitin-conjugating enzyme E2 that specifically acts with HECT-type and RBR family E3

ubiquitin-protein ligases. Does not function with most RING-containing E3 ubiquitin-protein ligases because it lacks intrinsic E3-independent reactivity with lysine; in contrast, it has activity with the RBR family E3 enzymes, such as PRKN, RNF31 and ARIH1, that function like RING-HECT hybrids. Accepts ubiquitin from the E1 complex and catalyzes its covalent attachment to other proteins. Mediates ubiquitination by the CUL9-RBX1 complex (PubMed:38605244). In vitro catalyzes 'Lys-11'-linked polyubiquitination. Involved in the selective degradation of short-lived and abnormal proteins. Down- regulated during the S-phase it is involved in progression through the cell cycle. Regulates nuclear hormone receptors transcriptional activity. May play a role in myelopoiesis.

Cellular Location

Nucleus. Cytoplasm

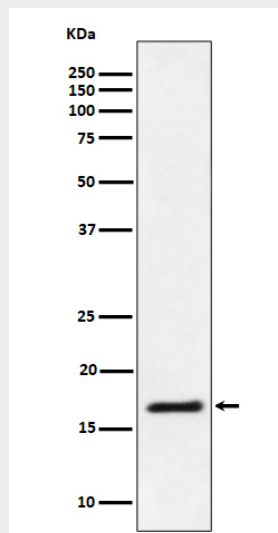
Tissue Location

Ubiquitous, with highest expression in testis.

Ube2L3 / UBC7 Antibody - Protocols

Provided below are standard protocols that you may find useful for product applications.

- [Western Blot](#)
- [Blocking Peptides](#)
- [Dot Blot](#)
- [Immunohistochemistry](#)
- [Immunofluorescence](#)
- [Immunoprecipitation](#)
- [Flow Cytometry](#)
- [Cell Culture](#)

Ube2L3 / UBC7 Antibody - Images

Western blot analysis of Ube2L3 / UBC7 expression in Jurkat cell lysate.