

**ALDH7A1 Antibody**  
**Rabbit mAb**  
**Catalog # AP92867****Specification**

---

**ALDH7A1 Antibody - Product Information**

Application	WB, IHC
Primary Accession	<a href="#">P49419</a>
Clonality	Monoclonal
<b>Other Names</b>	
ALDH7A1; Antiquitin; ATQ1; Betaine aldehyde dehydrogenase; EPD; PDE;	

Isotype	Rabbit IgG
Host	Rabbit
Calculated MW	58487 Da

**ALDH7A1 Antibody - Additional Information**

Dilution	WB~~1:1000 IHC~~1:100~500
Purification	Affinity-chromatography
Immunogen	A synthesized peptide derived from human ALDH7A1
Description	Multifunctional enzyme mediating important protective effects. Metabolizes betaine aldehyde to betaine, an important cellular osmolyte and methyl donor. Protects cells from oxidative stress by metabolizing a number of lipid peroxidation-derived aldehydes. Involved in lysine catabolism.
Storage Condition and Buffer	Rabbit IgG in phosphate buffered saline , pH 7.4, 150mM NaCl, 0.02% sodium azide and 50% glycerol. Store at +4°C short term. Store at -20°C long term. Avoid freeze / thaw cycle.

**ALDH7A1 Antibody - Protein Information****Name** ALDH7A1 ([HGNC:877](#))**Synonyms** ATQ1**Function**

Multifunctional enzyme mediating important protective effects. Metabolizes betaine aldehyde to betaine, an important cellular osmolyte and methyl donor. Protects cells from oxidative stress by metabolizing a number of lipid peroxidation-derived aldehydes. Involved in lysine catabolism.

**Cellular Location**

[Isoform 2]: Cytoplasm, cytosol. Nucleus

#### **Tissue Location**

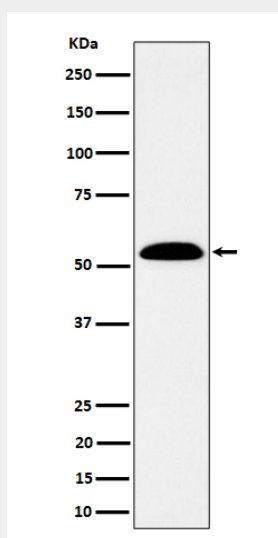
Abundant in hepatoma cells and fetal cochlea, ovary, eye, heart, adrenal gland, liver and kidney. Low levels present in adult peripheral blood leukocytes and fetal brain, thymus, spleen, skeletal muscle, lung and tongue.

#### **ALDH7A1 Antibody - Protocols**

Provided below are standard protocols that you may find useful for product applications.

- [Western Blot](#)
- [Blocking Peptides](#)
- [Dot Blot](#)
- [Immunohistochemistry](#)
- [Immunofluorescence](#)
- [Immunoprecipitation](#)
- [Flow Cytometry](#)
- [Cell Culture](#)

#### **ALDH7A1 Antibody - Images**



Western blot analysis of ALDH7A1 expression in SW480 cell lysate.