

**LAT Antibody**  
**Rabbit mAb**  
**Catalog # AP92876**

## Specification

---

### LAT Antibody - Product Information

Application	WB, IHC
Primary Accession	<a href="#">O43561</a>
Clonality	Monoclonal
<b>Other Names</b>	
lat; LAT1; pp36;	
Isotype	Rabbit IgG
Host	Rabbit
Calculated MW	27930 Da

### LAT Antibody - Additional Information

Dilution	WB~~1:1000 IHC~~1:100~500
Purification	Affinity-chromatography
Immunogen	A synthesized peptide derived from human LAT
Description	Required for TCR (T-cell antigen receptor)- and pre-TCR-mediated signaling, both in mature T-cells and during their development. Involved in FCGR3 (low affinity immunoglobulin gamma Fc region receptor III)-mediated signaling in natural killer cells and FCER1 (high affinity immunoglobulin epsilon receptor)-mediated signaling in mast cells.
Storage Condition and Buffer	Rabbit IgG in phosphate buffered saline , pH 7.4, 150mM NaCl, 0.02% sodium azide and 50% glycerol. Store at +4°C short term. Store at -20°C long term. Avoid freeze / thaw cycle.

### LAT Antibody - Protein Information

**Name** LAT

#### Function

Required for TCR (T-cell antigen receptor)- and pre-TCR- mediated signaling, both in mature T-cells and during their development (PubMed:<a href="http://www.uniprot.org/citations/23514740" target="\_blank">23514740</a>, PubMed:<a href="http://www.uniprot.org/citations/25907557" target="\_blank">25907557</a>). Involved in FCGR3 (low affinity immunoglobulin gamma Fc region receptor III)-mediated signaling in natural killer cells and FCER1 (high affinity immunoglobulin epsilon receptor)-mediated signaling in mast cells. Couples activation of these

receptors and their associated kinases with distal intracellular events such as mobilization of intracellular calcium stores, PKC activation, MAPK activation or cytoskeletal reorganization through the recruitment of PLCG1, GRB2, GRAP2, and other signaling molecules.

**Cellular Location**

Cell membrane; Single-pass type III membrane protein. Note=Present in lipid rafts

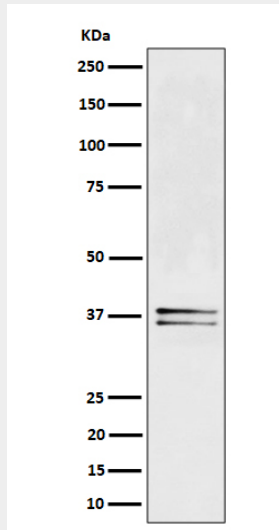
**Tissue Location**

Expressed in thymus, T-cells, NK cells, mast cells and, at lower levels, in spleen. Present in T-cells but not B-cells (at protein level).

**LAT Antibody - Protocols**

Provided below are standard protocols that you may find useful for product applications.

- [Western Blot](#)
- [Blocking Peptides](#)
- [Dot Blot](#)
- [Immunohistochemistry](#)
- [Immunofluorescence](#)
- [Immunoprecipitation](#)
- [Flow Cytometry](#)
- [Cell Culture](#)

**LAT Antibody - Images**

Western blot analysis of LAT expression in Jurkat cell lysate.