

**R Cadherin Antibody**  
**Rabbit mAb**  
**Catalog # AP92877****Specification**

---

**R Cadherin Antibody - Product Information**

Application	WB
Primary Accession	<a href="#">P55283</a>
Reactivity	Rat
Clonality	Monoclonal
<b>Other Names</b>	
Cadherin 4; cdh4; R CAD; Retinal cadherin;	
Isotype	Rabbit IgG
Host	Rabbit
Calculated MW	100281 Da

**R Cadherin Antibody - Additional Information**

Dilution	WB~~1:1000
Purification	Affinity-chromatography
Immunogen	A synthesized peptide derived from human R Cadherin
Description	Cadherins are calcium dependent cell adhesion proteins. They preferentially interact with themselves in a homophilic manner in connecting cells; cadherins may thus contribute to the sorting of heterogeneous cell types. May play an important role in retinal development.
Storage Condition and Buffer	Rabbit IgG in phosphate buffered saline , pH 7.4, 150mM NaCl, 0.02% sodium azide and 50% glycerol. Store at +4°C short term. Store at -20°C long term. Avoid freeze / thaw cycle.

**R Cadherin Antibody - Protein Information****Name** CDH4**Function**

Cadherins are calcium-dependent cell adhesion proteins. They preferentially interact with themselves in a homophilic manner in connecting cells; cadherins may thus contribute to the sorting of heterogeneous cell types. May play an important role in retinal development.

**Cellular Location**

Cell membrane; Single-pass type I membrane protein

**Tissue Location**

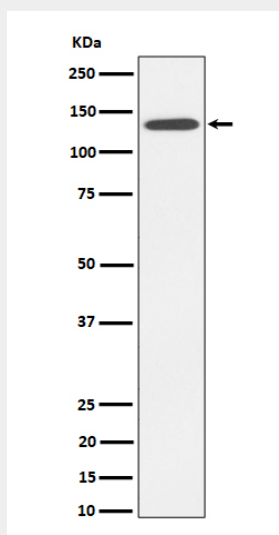
Expressed mainly in brain but also found in other tissues

### **R Cadherin Antibody - Protocols**

Provided below are standard protocols that you may find useful for product applications.

- [Western Blot](#)
- [Blocking Peptides](#)
- [Dot Blot](#)
- [Immunohistochemistry](#)
- [Immunofluorescence](#)
- [Immunoprecipitation](#)
- [Flow Cytometry](#)
- [Cell Culture](#)

### **R Cadherin Antibody - Images**



Western blot analysis of R Cadherin expression in HepG2 cell lysate.