

NAT1 Antibody
Rabbit mAb
Catalog # AP92888

Specification

NAT1 Antibody - Product Information

Application	WB, FC, ICC
Primary Accession	P18440
Clonality	Monoclonal
Other Names	
AAC1; Arylamide acetylase 1; mNAT; N acetyltransferase type 1; nat1;	

Isotype	Rabbit IgG
Host	Rabbit
Calculated MW	33899 Da

NAT1 Antibody - Additional Information

Dilution	WB~~1:1000 FC~~1:10~50 ICC~~N/A
Purification	Affinity-chromatography
Immunogen	A synthesized peptide derived from human NAT1
Description	Participates in the detoxification of a plethora of hydrazine and arylamine drugs. Catalyzes the N- or O-acetylation of various arylamine and heterocyclic amine substrates and is able to bioactivate several known carcinogens.
Storage Condition and Buffer	Rabbit IgG in phosphate buffered saline , pH 7.4, 150mM NaCl, 0.02% sodium azide and 50% glycerol. Store at +4°C short term. Store at -20°C long term. Avoid freeze / thaw cycle.

NAT1 Antibody - Protein Information

Name NAT1

Synonyms AAC1

Function

Participates in the detoxification of a plethora of hydrazine and arylamine drugs. Catalyzes the N- or O-acetylation of various arylamine and heterocyclic amine substrates and is able to bioactivate several known carcinogens.

Cellular Location

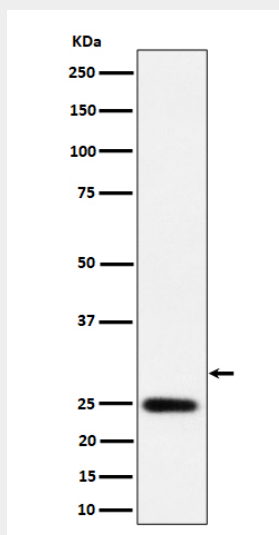
Cytoplasm.

NAT1 Antibody - Protocols

Provided below are standard protocols that you may find useful for product applications.

- [Western Blot](#)
- [Blocking Peptides](#)
- [Dot Blot](#)
- [Immunohistochemistry](#)
- [Immunofluorescence](#)
- [Immunoprecipitation](#)
- [Flow Cytometry](#)
- [Cell Culture](#)

NAT1 Antibody - Images



Western blot analysis of NAT1 expression in LnCaP cell lysate.