

Cadherin 10 Antibody
Rabbit mAb
Catalog # AP92889**Specification**

Cadherin 10 Antibody - Product Information

Application	WB
Primary Accession	O9Y6N8
Reactivity	Rat
Clonality	Monoclonal
Other Names	
Cadherin 10 type 2; CDH10; T2 cadherin;	
Isotype	Rabbit IgG
Host	Rabbit
Calculated MW	88451 Da

Cadherin 10 Antibody - Additional Information

Dilution	WB~~1:1000
Purification	Affinity-chromatography
Immunogen	A synthesized peptide derived from human Cadherin 10
Description	Cadherins are calcium-dependent cell adhesion proteins. They preferentially interact with themselves in a homophilic manner in connecting cells; cadherins may thus contribute to the sorting of heterogeneous cell types.
Storage Condition and Buffer	Rabbit IgG in phosphate buffered saline , pH 7.4, 150mM NaCl, 0.02% sodium azide and 50% glycerol. Store at +4°C short term. Store at -20°C long term. Avoid freeze / thaw cycle.

Cadherin 10 Antibody - Protein Information**Name** CDH10**Function**

Cadherins are calcium-dependent cell adhesion proteins. They preferentially interact with themselves in a homophilic manner in connecting cells; cadherins may thus contribute to the sorting of heterogeneous cell types.

Cellular Location

Cell membrane; Single-pass type I membrane protein

Tissue Location

Predominantly expressed in brain. Also found in adult and fetal kidney. Very low levels detected in

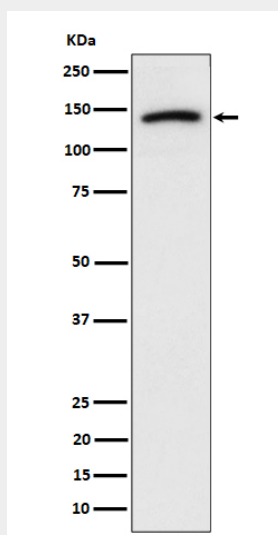
prostate and fetal lung.

Cadherin 10 Antibody - Protocols

Provided below are standard protocols that you may find useful for product applications.

- [Western Blot](#)
- [Blocking Peptides](#)
- [Dot Blot](#)
- [Immunohistochemistry](#)
- [Immunofluorescence](#)
- [Immunoprecipitation](#)
- [Flow Cytometry](#)
- [Cell Culture](#)

Cadherin 10 Antibody - Images



Western blot analysis of Cadherin 10 expression in U-87 MG cell lysate.