

MPP1 Antibody
Rabbit mAb
Catalog # AP92891**Specification**

MPP1 Antibody - Product Information

Application	WB
Primary Accession	Q00013
Clonality	Monoclonal
Other Names	
AAG12; DXS552; DXS552E; EMP55; Membrane protein palmitoylated 1; MPP1; MRG1; p55; palmitoylated 1; PEMP;	
Isotype	Rabbit IgG
Host	Rabbit
Calculated MW	52296 Da

MPP1 Antibody - Additional Information

Purification	Affinity-chromatography
Immunogen	A synthesized peptide derived from human MPP1
Description	Essential regulator of neutrophil polarity. Regulates neutrophil polarization by regulating AKT1 phosphorylation through a mechanism that is independent of PIK3CG activity.
Storage Condition and Buffer	Rabbit IgG in phosphate buffered saline , pH 7.4, 150mM NaCl, 0.02% sodium azide and 50% glycerol. Store at +4°C short term. Store at -20°C long term. Avoid freeze / thaw cycle.

MPP1 Antibody - Protein Information**Name** MPP1**Synonyms** DXS552E, EMP55**Function**

Essential regulator of neutrophil polarity. Regulates neutrophil polarization by regulating AKT1 phosphorylation through a mechanism that is independent of PIK3CG activity (By similarity).

Cellular Location

Cell membrane; Lipid-anchor. Cell projection, stereocilium {ECO:0000250|UniProtKB:P70290}. Note=Colocalizes with WHRN at stereocilium tip during hair cell development (By similarity) Colocalizes with PALS1 in the retina, at the outer limiting membrane (OLM) (By similarity). Colocalizes with WHRN in the retina, at the outer limiting membrane (OLM), outer plexiform layer (OPL), basal bodies and at the connecting cilium (CC) (By similarity). Colocalizes with NF2 in

non-myelin-forming Schwann cells (PubMed:19144871) {ECO:0000250|UniProtKB:P70290, ECO:0000269|PubMed:19144871}

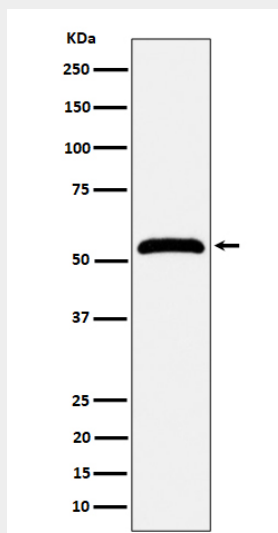
Tissue Location

Ubiquitous..

MPP1 Antibody - Protocols

Provided below are standard protocols that you may find useful for product applications.

- [Western Blot](#)
- [Blocking Peptides](#)
- [Dot Blot](#)
- [Immunohistochemistry](#)
- [Immunofluorescence](#)
- [Immunoprecipitation](#)
- [Flow Cytometry](#)
- [Cell Culture](#)

MPP1 Antibody - Images

Western blot analysis of MPP1 expression in Jurkat cell lysate.