

**Wnt16 Antibody**  
**Rabbit mAb**  
**Catalog # AP92892****Specification**

---

**Wnt16 Antibody - Product Information**

Application	WB
Primary Accession	<a href="#">Q9UBV4</a>
Reactivity	Rat
Clonality	Monoclonal
<b>Other Names</b>	
WNT16;	
Isotype	Rabbit IgG
Host	Rabbit
Calculated MW	40690 Da

**Wnt16 Antibody - Additional Information**

Dilution	WB~~1:1000
Purification	Affinity-chromatography
Immunogen	A synthesized peptide derived from human Wnt16
Description	Ligand for members of the frizzled family of seven transmembrane receptors. Probable developmental protein. May be a signaling molecule which affects the development of discrete regions of tissues. Is likely to signal over only few cell diameters.
Storage Condition and Buffer	Rabbit IgG in phosphate buffered saline , pH 7.4, 150mM NaCl, 0.02% sodium azide and 50% glycerol. Store at +4°C short term. Store at -20°C long term. Avoid freeze / thaw cycle.

**Wnt16 Antibody - Protein Information****Name** WNT16**Function**

Ligand for members of the frizzled family of seven transmembrane receptors. Probable developmental protein. May be a signaling molecule which affects the development of discrete regions of tissues. Is likely to signal over only few cell diameters (By similarity).

**Cellular Location**

Secreted, extracellular space, extracellular matrix

**Tissue Location**

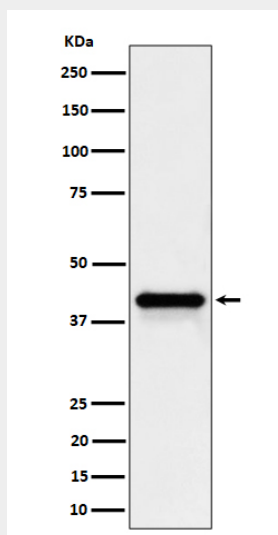
Isoform Wnt-16b is expressed in peripheral lymphoid organs such as spleen, appendix, and lymph nodes, in kidney but not in bone marrow. Isoform Wnt-16a is expressed at significant levels only in the pancreas

### Wnt16 Antibody - Protocols

Provided below are standard protocols that you may find useful for product applications.

- [Western Blot](#)
- [Blocking Peptides](#)
- [Dot Blot](#)
- [Immunohistochemistry](#)
- [Immunofluorescence](#)
- [Immunoprecipitation](#)
- [Flow Cytometry](#)
- [Cell Culture](#)

### Wnt16 Antibody - Images



Western blot analysis of Wnt16 expression in HepG2 cell lysate.