

SARA Antibody
Rabbit mAb
Catalog # AP92893

Specification

SARA Antibody - Product Information

Application	WB, IHC
Primary Accession	O95405
Clonality	Monoclonal
Other Names	
hSARA; MADHIP; NSP; SAR1; SARA; SARA1; SMADIP; ZFYVE9;	
Isotype	Rabbit IgG
Host	Rabbit
Calculated MW	156403 Da

SARA Antibody - Additional Information

Dilution	WB~~1:1000 IHC~~1:100~500
Purification	Affinity-chromatography
Immunogen	A synthesized peptide derived from human SARA
Description	Early endosomal protein that functions to recruit SMAD2/SMAD3 to intracellular membranes and to the TGF-beta receptor. Plays a significant role in TGF-mediated signaling by regulating the subcellular location of SMAD2 and SMAD3 and modulating the transcriptional activity of the SMAD3/SMAD4 complex. Possibly associated with TGF-beta receptor internalization.
Storage Condition and Buffer	Rabbit IgG in phosphate buffered saline , pH 7.4, 150mM NaCl, 0.02% sodium azide and 50% glycerol. Store at +4°C short term. Store at -20°C long term. Avoid freeze / thaw cycle.

SARA Antibody - Protein Information

Name ZFYVE9

Synonyms MADHIP, SARA, SMADIP

Function

Early endosomal protein that functions to recruit SMAD2/SMAD3 to intracellular membranes and to the TGF-beta receptor. Plays a significant role in TGF-mediated signaling by regulating the subcellular location of SMAD2 and SMAD3 and modulating the transcriptional activity of the

SMAD3/SMAD4 complex. Possibly associated with TGF-beta receptor internalization.

Cellular Location

Cytoplasm. Early endosome membrane.

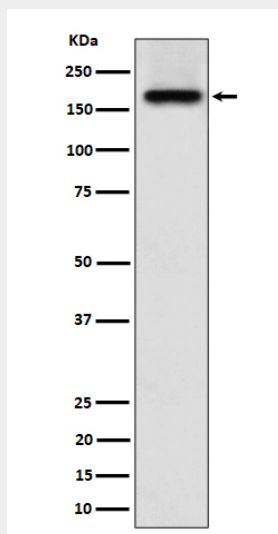
Tissue Location

Ubiquitous. In the brain found primarily in the cerebrovascular smooth muscle cells and reactive astrocytes

SARA Antibody - Protocols

Provided below are standard protocols that you may find useful for product applications.

- [Western Blot](#)
- [Blocking Peptides](#)
- [Dot Blot](#)
- [Immunohistochemistry](#)
- [Immunofluorescence](#)
- [Immunoprecipitation](#)
- [Flow Cytometry](#)
- [Cell Culture](#)

SARA Antibody - Images

Western blot analysis of SARA expression in A673 cell lysate.