

Phospho-eIF4B (S406) Antibody
Rabbit mAb
Catalog # AP92908**Specification**

Phospho-eIF4B (S406) Antibody - Product Information

| | |
|--------------------|------------------------|
| Application | WB, IHC |
| Primary Accession | P23588 |
| Reactivity | Rat |
| Clonality | Monoclonal |
| Other Names | |
| EIF4B; | |
| Isotype | Rabbit IgG |
| Host | Rabbit |
| Calculated MW | 69151 Da |

Phospho-eIF4B (S406) Antibody - Additional Information

| | |
|------------------------------|--|
| Dilution | WB~~1:1000 IHC~~1:100~500 |
| Purification | Affinity-chromatography |
| Immunogen | A synthesized peptide derived from human Phospho-eIF4B (S406) |
| Description | Required for the binding of mRNA to ribosomes. Functions in close association with EIF4-F and EIF4-A. Binds near the 5'-terminal cap of mRNA in presence of EIF-4F and ATP. Promotes the ATPase activity and the ATP-dependent RNA unwinding activity of both EIF4-A and EIF4-F. |
| Storage Condition and Buffer | Rabbit IgG in phosphate buffered saline , pH 7.4, 150mM NaCl, 0.02% sodium azide and 50% glycerol. Store at +4°C short term. Store at -20°C long term. Avoid freeze / thaw cycle. |

Phospho-eIF4B (S406) Antibody - Protein Information**Name** EIF4B**Function**

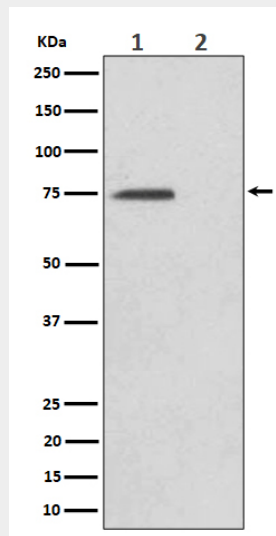
Required for the binding of mRNA to ribosomes. Functions in close association with EIF4-F and EIF4-A. Binds near the 5'-terminal cap of mRNA in presence of EIF-4F and ATP. Promotes the ATPase activity and the ATP-dependent RNA unwinding activity of both EIF4-A and EIF4-F.

Phospho-eIF4B (S406) Antibody - Protocols

Provided below are standard protocols that you may find useful for product applications.

- [Western Blot](#)
- [Blocking Peptides](#)
- [Dot Blot](#)
- [Immunohistochemistry](#)
- [Immunofluorescence](#)
- [Immunoprecipitation](#)
- [Flow Cytometry](#)
- [Cell Culture](#)

Phospho-eIF4B (S406) Antibody - Images



Western blot analysis of Phospho-eIF4B (S406) expression in (1) HeLa cell lysate; (2) HeLa cell treated with Alkaline Phosphatase lysate.