

**Nucleolin Antibody**  
**Rabbit mAb**  
**Catalog # AP92909****Specification**

---

**Nucleolin Antibody - Product Information**

Application	WB, IHC
Primary Accession	<a href="#">P19338</a>
Clonality	Monoclonal
<b>Other Names</b>	
NCL; Nucl; Nucleolin;	
Isotype	Rabbit IgG
Host	Rabbit
Calculated MW	76614 Da

**Nucleolin Antibody - Additional Information**

Dilution	WB~~1:1000 IHC~~1:100~500
Purification	Affinity-chromatography
Immunogen	A synthesized peptide derived from human Nucleolin
Description	Nucleolin is the major nucleolar protein of growing eukaryotic cells. It is found associated with intranucleolar chromatin and pre-ribosomal particles.
Storage Condition and Buffer	Rabbit IgG in phosphate buffered saline , pH 7.4, 150mM NaCl, 0.02% sodium azide and 50% glycerol. Store at +4°C short term. Store at -20°C long term. Avoid freeze / thaw cycle.

**Nucleolin Antibody - Protein Information****Name** NCL**Function**

Nucleolin is the major nucleolar protein of growing eukaryotic cells. It is found associated with intranucleolar chromatin and pre-ribosomal particles. It induces chromatin decondensation by binding to histone H1. It is thought to play a role in pre-rRNA transcription and ribosome assembly. May play a role in the process of transcriptional elongation. Binds RNA oligonucleotides with 5'-UUAGGG- 3' repeats more tightly than the telomeric single-stranded DNA 5'- TTAGGG-3' repeats.

**Cellular Location**

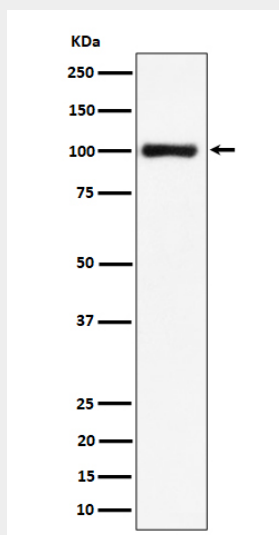
Nucleus, nucleolus. Cytoplasm. Note=Localized in cytoplasmic mRNP granules containing untranslated mRNAs

## Nucleolin Antibody - Protocols

Provided below are standard protocols that you may find useful for product applications.

- [Western Blot](#)
- [Blocking Peptides](#)
- [Dot Blot](#)
- [Immunohistochemistry](#)
- [Immunofluorescence](#)
- [Immunoprecipitation](#)
- [Flow Cytometry](#)
- [Cell Culture](#)

## Nucleolin Antibody - Images



Western blot analysis of Nucleolin expression in HeLa cell lysate.