

ARGLU1 Antibody (N-term)
Affinity Purified Rabbit Polyclonal Antibody (Pab)
Catalog # AP9290a**Specification**

ARGLU1 Antibody (N-term) - Product Information

Application	WB, IHC-P, FC,E
Primary Accession	Q9NWB6
Other Accession	Q2TA42
Reactivity	Human
Predicted	Bovine
Host	Rabbit
Clonality	Polyclonal
Isotype	Rabbit IgG
Calculated MW	33216
Antigen Region	48-74

ARGLU1 Antibody (N-term) - Additional Information**Gene ID** 55082**Other Names**

Arginine and glutamate-rich protein 1, ARGLU1

Target/Specificity

This ARGLU1 antibody is generated from rabbits immunized with a KLH conjugated synthetic peptide between 48-74 amino acids from the N-terminal region of human ARGLU1.

Dilution

WB~~1:1000
IHC-P~~1:50~100
FC~~1:10~50

Format

Purified polyclonal antibody supplied in PBS with 0.09% (W/V) sodium azide. This antibody is purified through a protein A column, followed by peptide affinity purification.

Storage

Maintain refrigerated at 2-8°C for up to 2 weeks. For long term storage store at -20°C in small aliquots to prevent freeze-thaw cycles.

Precautions

ARGLU1 Antibody (N-term) is for research use only and not for use in diagnostic or therapeutic procedures.

ARGLU1 Antibody (N-term) - Protein Information**Name** ARGLU1

Function Required for the estrogen-dependent expression of ESR1 target genes. Can act in cooperation with MED1.

Cellular Location

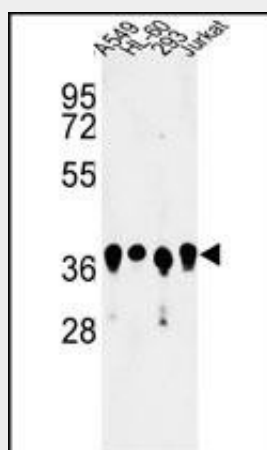
Nucleus. Note=Recruited, in an estrogen-dependent manner, to ESR1 target gene promoters. Colocalizes with MED1

ARGLU1 Antibody (N-term) - Protocols

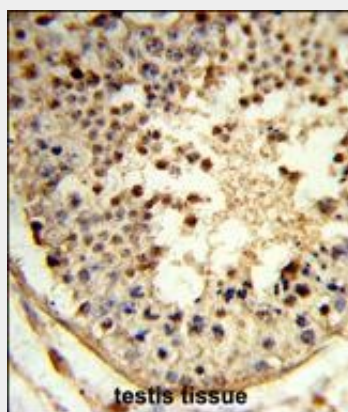
Provided below are standard protocols that you may find useful for product applications.

- [Western Blot](#)
- [Blocking Peptides](#)
- [Dot Blot](#)
- [Immunohistochemistry](#)
- [Immunofluorescence](#)
- [Immunoprecipitation](#)
- [Flow Cytometry](#)
- [Cell Culture](#)

ARGLU1 Antibody (N-term) - Images

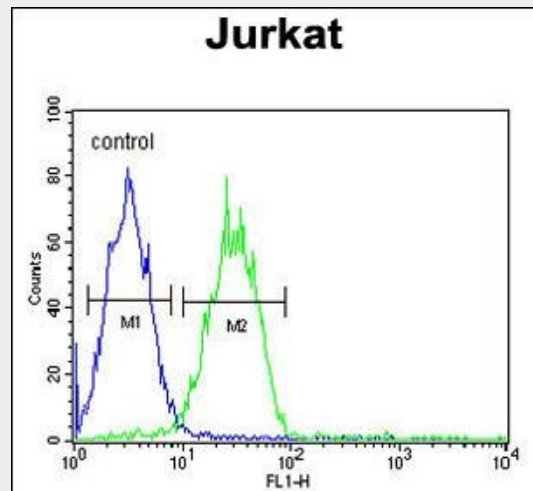


Western blot analysis of ARGLU1 Antibody (N-term) (Cat. #AP9290a) in A549, HL-60, 293, Jurkat cell line lysates (35ug/lane). ARGLU1 (arrow) was detected using the purified Pab.



Formalin-fixed and paraffin-embedded human testis tissue reacted with ARGLU1 Antibody

(N-term), which was peroxidase-conjugated to the secondary antibody, followed by DAB staining. This data demonstrates the use of this antibody for immunohistochemistry; clinical relevance has not been evaluated.



ARGLU1 Antibody (N-term) (Cat. #AP9290a) flow cytometric analysis of Jurkat cells (right histogram) compared to a negative control cell (left histogram). FITC-conjugated goat-anti-rabbit secondary antibodies were used for the analysis.

ARGLU1 Antibody (N-term) - Background

ARGLU1 belongs to the UPF0430 family. There are two named isoforms.

ARGLU1 Antibody (N-term) - References

- Olsen, J.V., et.al., Cell 127 (3), 635-648 (2006)
- Beausoleil, S.A., et.al., Proc. Natl. Acad. Sci. U.S.A. 101 (33), 12130-12135 (2004)
- Beausoleil, S.A., et.al., Proc. Natl. Acad. Sci. U.S.A. 101 (33), 12130-12135 (2004)