

**CYFIP1 Antibody**  
**Rabbit mAb**  
**Catalog # AP92929****Specification**

---

**CYFIP1 Antibody - Product Information**

Application	WB, FC, ICC
Primary Accession	<a href="#">Q7L576</a>
Reactivity	Rat
Clonality	Monoclonal
<b>Other Names</b>	
CYFIP1; P140SRA1; SHYC; SRA1;	
Isotype	Rabbit IgG
Host	Rabbit
Calculated MW	145182 Da

**CYFIP1 Antibody - Additional Information**

Dilution	WB~~1:1000 FC~~1:10~50 ICC~~N/A
Purification	Affinity-chromatography
Immunogen	A synthesized peptide derived from human CYFIP1
Description	Component of the CYFIP1-EIF4E-FMR1 complex which binds to the mRNA cap and mediates translational repression. In the CYFIP1-EIF4E-FMR1 complex this subunit is an adapter between EIF4E and FMR1. Promotes the translation repression activity of FMR1 in brain probably by mediating its association with EIF4E and mRNA (By similarity).
Storage Condition and Buffer	Rabbit IgG in phosphate buffered saline , pH 7.4, 150mM NaCl, 0.02% sodium azide and 50% glycerol. Store at +4°C short term. Store at -20°C long term. Avoid freeze / thaw cycle.

**CYFIP1 Antibody - Protein Information****Name** CYFIP1 ([HGNC:13759](#))**Function**

Component of the CYFIP1-EIF4E-FMR1 complex which binds to the mRNA cap and mediates translational repression. In the CYFIP1-EIF4E-FMR1 complex this subunit is an adapter between EIF4E and FMR1. Promotes the translation repression activity of FMR1 in brain probably by mediating its association with EIF4E and mRNA (By similarity). Regulates formation of membrane

ruffles and lamellipodia. Plays a role in axon outgrowth. Binds to F-actin but not to RNA. Part of the WAVE complex that regulates actin filament reorganization via its interaction with the Arp2/3 complex. Actin remodeling activity is regulated by RAC1. Regulator of epithelial morphogenesis. As component of the WAVE1 complex, required for BDNF-NTRK2 endocytic trafficking and signaling from early endosomes (By similarity). May act as an invasion suppressor in cancers.

#### Cellular Location

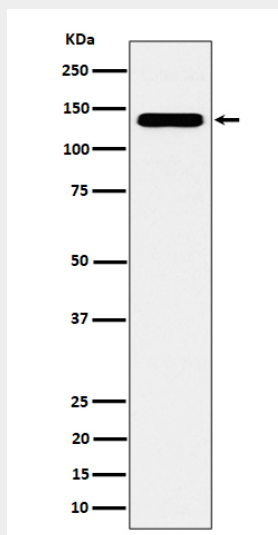
Cytoplasm {ECO:0000250|UniProtKB:Q7TMB8}. Cytoplasm, perinuclear region {ECO:0000250|UniProtKB:Q7TMB8}. Cell projection, lamellipodium {ECO:0000250|UniProtKB:Q7TMB8}. Cell projection, ruffle {ECO:0000250|UniProtKB:Q7TMB8}. Synapse, synaptosome {ECO:0000250|UniProtKB:Q7TMB8}. Note=Highly expressed in the perinuclear region (By similarity). Enriched in synaptosomes (By similarity). Also enriched in membrane ruffles and at the tips of lamellipodia (By similarity). {ECO:0000250|UniProtKB:Q7TMB8}

#### CYFIP1 Antibody - Protocols

Provided below are standard protocols that you may find useful for product applications.

- [Western Blot](#)
- [Blocking Peptides](#)
- [Dot Blot](#)
- [Immunohistochemistry](#)
- [Immunofluorescence](#)
- [Immunoprecipitation](#)
- [Flow Cytometry](#)
- [Cell Culture](#)

#### CYFIP1 Antibody - Images



Western blot analysis of CYFIP1 expression in HeLa cell lysate.