

EXOC3 Antibody
Rabbit mAb
Catalog # AP92930**Specification**

EXOC3 Antibody - Product Information

Application	WB, IHC, ICC, IP
Primary Accession	O60645
Reactivity	Rat
Clonality	Monoclonal
Other Names	
Exoc3; Sec6; SEC6L1; Sec6p;	
Isotype	Rabbit IgG
Host	Rabbit
Calculated MW	85567 Da

EXOC3 Antibody - Additional Information

Dilution	WB~~1:1000 IHC~~1:100~500 ICC~~N/A IP~~N/A
Purification	Affinity-chromatography
Immunogen	A synthesized peptide derived from human EXOC3
Description	Component of the exocyst complex involved in the docking of exocytic vesicles with fusion sites on the plasma membrane.
Storage Condition and Buffer	Rabbit IgG in phosphate buffered saline , pH 7.4, 150mM NaCl, 0.02% sodium azide and 50% glycerol. Store at +4°C short term. Store at -20°C long term. Avoid freeze / thaw cycle.

EXOC3 Antibody - Protein Information**Name** EXOC3**Synonyms** SEC6, SEC6L1**Function**

Component of the exocyst complex involved in the docking of exocytic vesicles with fusion sites on the plasma membrane.

Cellular Location

Cytoplasm {ECO:0000250|UniProtKB:O54921}. Cytoplasm, perinuclear region {ECO:0000250|UniProtKB:O54921}. Cell projection, growth cone {ECO:0000250|UniProtKB:O54921}. Midbody. Golgi apparatus. Cell projection, neuron projection

{ECO:0000250|UniProtKB:Q62825}. Note=Perinuclear in undifferentiated cells. Redistributes to growing neurites and growth cones during neuronal differentiation (By similarity). During mitosis, early recruitment to the midbody requires RALA, but not RALB, and EXOC2. In late stages of cytokinesis, localization to the midbody is RALB- dependent (PubMed:18756269).
{ECO:0000250|UniProtKB:O54921, ECO:0000269|PubMed:18756269}

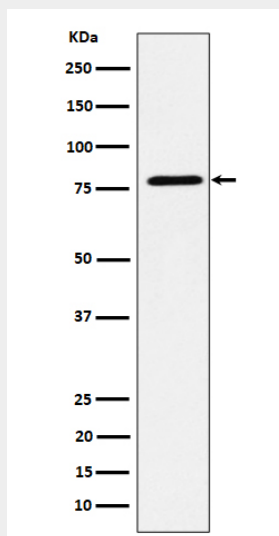
Tissue Location

Expressed in epididymis (at protein level).

EXOC3 Antibody - Protocols

Provided below are standard protocols that you may find useful for product applications.

- [Western Blot](#)
- [Blocking Peptides](#)
- [Dot Blot](#)
- [Immunohistochemistry](#)
- [Immunofluorescence](#)
- [Immunoprecipitation](#)
- [Flow Cytometry](#)
- [Cell Culture](#)

EXOC3 Antibody - Images

Western blot analysis of EXOC3 expression in MCF7 cell lysate.