

SF3A3 Antibody
Rabbit mAb
Catalog # AP92933

Specification

SF3A3 Antibody - Product Information

Application	WB, IHC, ICC
Primary Accession	Q12874
Reactivity	Rat
Clonality	Monoclonal
Other Names	
SF3A3; PRP9; PRPF9; SAP61; SF3a60;	
Isotype	Rabbit IgG
Host	Rabbit
Calculated MW	58849 Da

SF3A3 Antibody - Additional Information

Dilution	WB~~1:1000 IHC~~1:100~500 ICC~~N/A
Purification	Affinity-chromatography
Immunogen	A synthesized peptide derived from human SF3A3
Description	SF3A3 is subunit 3 of the splicing factor SF3A. Splicing factor 3a is a heterotrimer consisting of subunits 1, 2 and 3, and is necessary for the conversion of 15S U2 snRNP into an active 17S particle that performs pre-mRNA splicing. SF3A interacts with the pre-mRNA branch site early during spliceosome formation.
Storage Condition and Buffer	Rabbit IgG in phosphate buffered saline , pH 7.4, 150mM NaCl, 0.02% sodium azide and 50% glycerol. Store at +4°C short term. Store at -20°C long term. Avoid freeze / thaw cycle.

SF3A3 Antibody - Protein Information

Name SF3A3

Synonyms SAP61

Function

Component of the 17S U2 SnRNP complex of the spliceosome, a large ribonucleoprotein complex that removes introns from transcribed pre-mRNAs (PubMed:10882114, PubMed:11533230, PubMed:32494006, PubMed:34822310, PubMed:8022796). The 17S U2 SnRNP complex (1) directly participates in early spliceosome assembly and (2) mediates recognition of the intron branch site during pre-mRNA splicing by promoting the selection of the pre-mRNA branch-site adenosine, the nucleophile for the first step of splicing (PubMed:10882114, PubMed:11533230, PubMed:32494006, PubMed:34822310). Within the 17S U2 SnRNP complex, SF3A3 is part of the SF3A subcomplex that contributes to the assembly of the 17S U2 snRNP, and the subsequent assembly of the pre-spliceosome 'E' complex and the pre-catalytic spliceosome 'A' complex (PubMed:10882114, PubMed:11533230). Involved in pre-mRNA splicing as a component of pre-catalytic spliceosome 'B' complexes (PubMed:29360106, PubMed:30315277).

Cellular Location

Nucleus speckle. Nucleus

Tissue Location

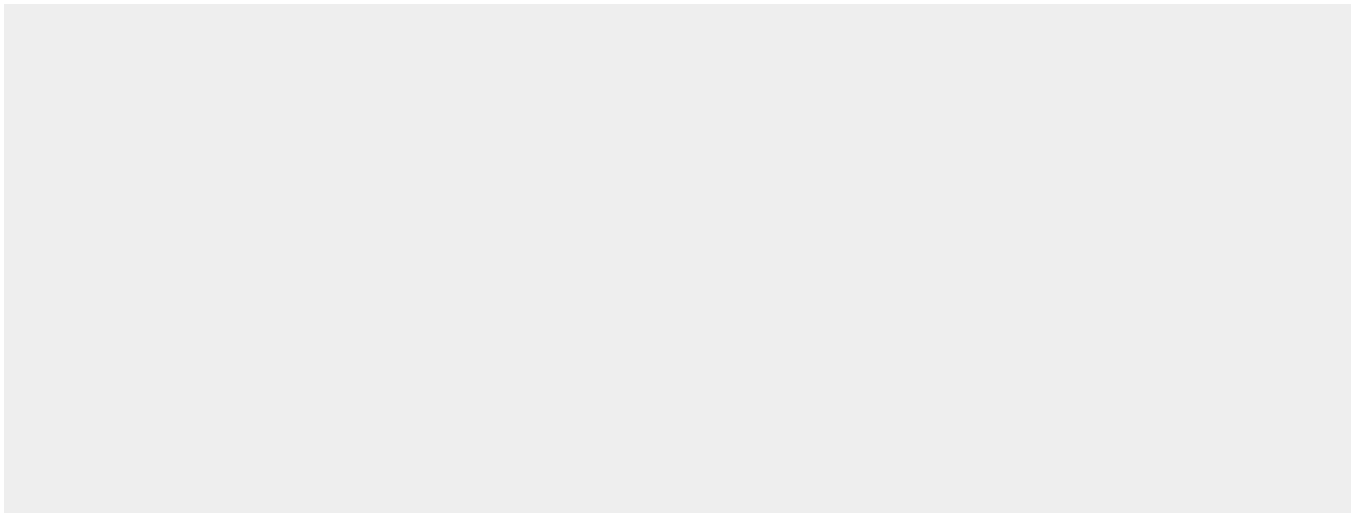
Ubiquitous..

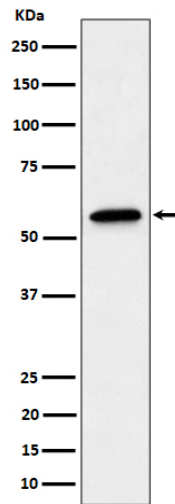
SF3A3 Antibody - Protocols

Provided below are standard protocols that you may find useful for product applications.

- [Western Blot](#)
- [Blocking Peptides](#)
- [Dot Blot](#)
- [Immunohistochemistry](#)
- [Immunofluorescence](#)
- [Immunoprecipitation](#)
- [Flow Cytometry](#)
- [Cell Culture](#)

SF3A3 Antibody - Images





Western blot analysis of SF3A3 expression in A431 cell lysate.