

Syndecan 3 Antibody
Rabbit mAb
Catalog # AP92937**Specification**

Syndecan 3 Antibody - Product Information

Application	WB
Primary Accession	O75056
Reactivity	Rat
Clonality	Monoclonal
Other Names	
Sdc3; SDCN; SYND3; syndecan proteoglycan 3;	
Isotype	Rabbit IgG
Host	Rabbit
Calculated MW	45497 Da

Syndecan 3 Antibody - Additional Information

Dilution	WB~~1:1000
Purification	Affinity-chromatography
Immunogen	A synthesized peptide derived from human Syndecan 3
Description	Cell surface proteoglycan that may bear heparan sulfate (By similarity). May have a role in the organization of cell shape by affecting the actin cytoskeleton, possibly by transferring signals from the cell surface in a sugar-dependent mechanism.
Storage Condition and Buffer	Rabbit IgG in phosphate buffered saline , pH 7.4, 150mM NaCl, 0.02% sodium azide and 50% glycerol. Store at +4°C short term. Store at -20°C long term. Avoid freeze / thaw cycle.

Syndecan 3 Antibody - Protein Information**Name** SDC3**Synonyms** KIAA0468**Function**

Cell surface proteoglycan that may bear heparan sulfate (By similarity). May have a role in the organization of cell shape by affecting the actin cytoskeleton, possibly by transferring signals from the cell surface in a sugar-dependent mechanism.

Cellular Location

Cell membrane; Single-pass type I membrane protein

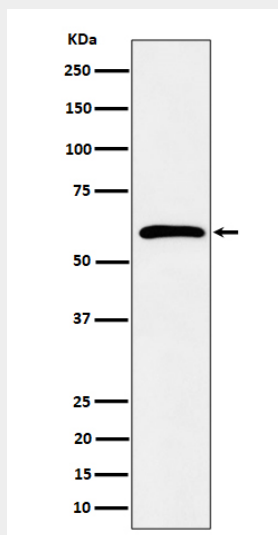
Tissue Location

Expressed in the nervous system, the adrenal gland, and the spleen.

Syndecan 3 Antibody - Protocols

Provided below are standard protocols that you may find useful for product applications.

- [Western Blot](#)
- [Blocking Peptides](#)
- [Dot Blot](#)
- [Immunohistochemistry](#)
- [Immunofluorescence](#)
- [Immunoprecipitation](#)
- [Flow Cytometry](#)
- [Cell Culture](#)

Syndecan 3 Antibody - Images

Western blot analysis of Syndecan 3 expression in K562 cell lysate.