

Glyt2 Antibody
Rabbit mAb
Catalog # AP92942

Specification

Glyt2 Antibody - Product Information

Application	WB
Primary Accession	O9Y345
Reactivity	Rat
Clonality	Monoclonal
Other Names	
Glycine transporter; GlyT2; NET1; SC6AC5; Slc6a5; Slc6a9;	
Isotype	Rabbit IgG
Host	Rabbit
Calculated MW	87434 Da

Glyt2 Antibody - Additional Information

Dilution	WB~~1:1000
Purification	Affinity-chromatography
Immunogen	A synthesized peptide derived from human Glyt2
Description	Terminates the action of glycine by its high affinity sodium-dependent reuptake into presynaptic terminals. May be responsible for the termination of neurotransmission at strychnine-sensitive glycinergic synapses.
Storage Condition and Buffer	Rabbit IgG in phosphate buffered saline , pH 7.4, 150mM NaCl, 0.02% sodium azide and 50% glycerol. Store at +4°C short term. Store at -20°C long term. Avoid freeze / thaw cycle.

Glyt2 Antibody - Protein Information

Name SLC6A5

Synonyms GLYT2, NET1

Function

Sodium- and chloride-dependent glycine transporter (PubMed:10381548, PubMed:10606742, PubMed:16751771, PubMed:31370103, PubMed:9845349). Terminates the action of glycine by its high affinity sodium-dependent reuptake into presynaptic terminals

(PubMed:9845349). May be responsible for the termination of neurotransmission at strychnine-sensitive glycinergic synapses (PubMed:9845349).

Cellular Location

Cell membrane; Multi-pass membrane protein

Tissue Location

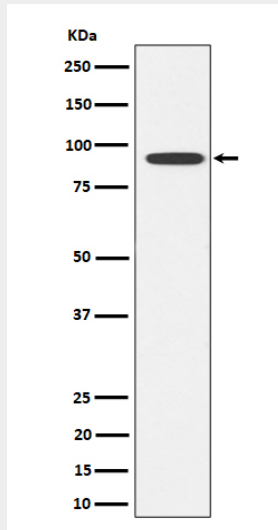
Expressed in medulla, and to a lesser extent in spinal cord and cerebellum.

Glyt2 Antibody - Protocols

Provided below are standard protocols that you may find useful for product applications.

- [Western Blot](#)
- [Blocking Peptides](#)
- [Dot Blot](#)
- [Immunohistochemistry](#)
- [Immunofluorescence](#)
- [Immunoprecipitation](#)
- [Flow Cytometry](#)
- [Cell Culture](#)

Glyt2 Antibody - Images



Western blot analysis of Glyt2 expression in SH-SY5Y cell lysate.