

**MYO19 Antibody**  
**Rabbit mAb**  
**Catalog # AP92949**

## Specification

---

### MYO19 Antibody - Product Information

Application	WB, ICC
Primary Accession	<a href="#">Q96H55</a>
Clonality	Monoclonal
<b>Other Names</b>	
myo19; Myohd1; myosin XIX;	
Isotype	Rabbit IgG
Host	Rabbit
Calculated MW	109135 Da

### MYO19 Antibody - Additional Information

Dilution	WB~~1:1000 ICC~~N/A
Purification	Affinity-chromatography
Immunogen	A synthesized peptide derived from human MYO19
Description	Myosins are actin-based motor molecules with ATPase activity. Unconventional myosins serve in intracellular movements. Their highly divergent tails are presumed to bind to membranous compartments, which would be moved relative to actin filaments. MYO19 is involved in mitochondrial motility.
Storage Condition and Buffer	Rabbit IgG in phosphate buffered saline , pH 7.4, 150mM NaCl, 0.02% sodium azide and 50% glycerol. Store at +4°C short term. Store at -20°C long term. Avoid freeze / thaw cycle.

### MYO19 Antibody - Protein Information

**Name** MYO19 {ECO:0000303|PubMed:19932026, ECO:0000312|HGNC:HGNC:26234}

#### Function

Actin-based motor molecule with ATPase activity that localizes to the mitochondrion outer membrane (PubMed:<a href="http://www.uniprot.org/citations/19932026" target="\_blank">19932026</a>, PubMed:<a href="http://www.uniprot.org/citations/23568824" target="\_blank">23568824</a>, PubMed:<a href="http://www.uniprot.org/citations/25447992" target="\_blank">25447992</a>). Motor protein that moves towards the plus-end of actin filaments (By similarity). Required for mitochondrial inheritance during mitosis (PubMed:<a href="http://www.uniprot.org/citations/25447992" target="\_blank">25447992</a>). May be

involved in mitochondrial transport or positioning (PubMed:<a href="http://www.uniprot.org/citations/23568824" target="\_blank">23568824</a>).

**Cellular Location**

Mitochondrion outer membrane; Peripheral membrane protein. Cytoplasm, cytoskeleton

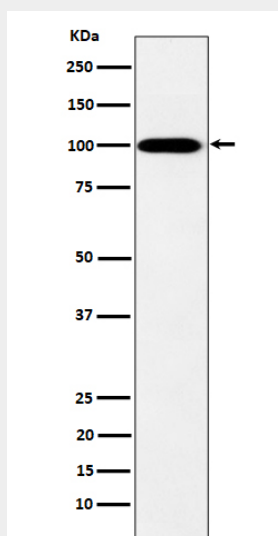
**Tissue Location**

Widely expressed in multiple tissues and cell lines.

**MYO19 Antibody - Protocols**

Provided below are standard protocols that you may find useful for product applications.

- [Western Blot](#)
- [Blocking Peptides](#)
- [Dot Blot](#)
- [Immunohistochemistry](#)
- [Immunofluorescence](#)
- [Immunoprecipitation](#)
- [Flow Cytometry](#)
- [Cell Culture](#)

**MYO19 Antibody - Images**

Western blot analysis of MYO19 expression in K562 cell lysate.