

**WDR1 Antibody**  
**Rabbit mAb**  
**Catalog # AP92951****Specification**

---

**WDR1 Antibody - Product Information**

Application	WB, IHC, ICC
Primary Accession	<a href="#">075083</a>
Clonality	Monoclonal
<b>Other Names</b>	
AIP1; NORI 1; wdr1;	
Isotype	Rabbit IgG
Host	Rabbit
Calculated MW	66194 Da

**WDR1 Antibody - Additional Information**

Dilution	WB~~1:1000 IHC~~1:100~500 ICC~~N/A
Purification	Affinity-chromatography
Immunogen	A synthesized peptide derived from human WDR1
Description	Induces disassembly of actin filaments in conjunction with ADF/cofilin family proteins (PubMed:15629458). Enhances cofilin-mediated actin severing (By similarity).
Storage Condition and Buffer	Rabbit IgG in phosphate buffered saline , pH 7.4, 150mM NaCl, 0.02% sodium azide and 50% glycerol. Store at +4°C short term. Store at -20°C long term. Avoid freeze / thaw cycle.

**WDR1 Antibody - Protein Information****Name** WDR1**Function**

Induces disassembly of actin filaments in conjunction with ADF/cofilin family proteins (PubMed:<a href="http://www.uniprot.org/citations/15629458" target="\_blank">15629458</a>, PubMed:<a href="http://www.uniprot.org/citations/27557945" target="\_blank">27557945</a>, PubMed:<a href="http://www.uniprot.org/citations/29751004" target="\_blank">29751004</a>). Enhances cofilin-mediated actin severing (By similarity). Involved in cytokinesis. Involved in chemotactic cell migration by restricting lamellipodial membrane protrusions (PubMed:<a href="http://www.uniprot.org/citations/18494608" target="\_blank">18494608</a>). Involved in myocardium sarcomere organization. Required for cardiomyocyte growth and maintenance (By similarity). Involved in megakaryocyte maturation and platelet shedding. Required for the

establishment of planar cell polarity (PCP) during follicular epithelium development and for cell shape changes during PCP; the function seems to implicate cooperation with CFL1 and/or DSTN/ADF. Involved in the generation/maintenance of cortical tension (By similarity). Involved in assembly and maintenance of epithelial apical cell junctions and plays a role in the organization of the perijunctional actomyosin belt (PubMed:<a href="http://www.uniprot.org/citations/25792565" target="\_blank">25792565</a>).

**Cellular Location**

Cytoplasm. Cytoplasm, cytoskeleton {ECO:0000250|UniProtKB:Q5RKI0}. Cell projection, podosome. Cell junction

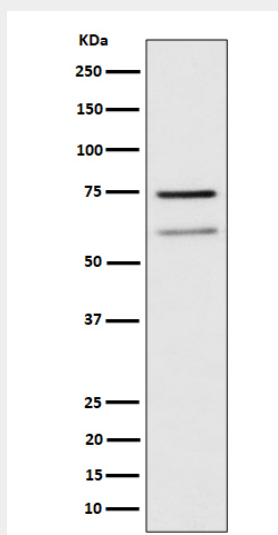
**Tissue Location**

Expressed in peripheral blood mononuclear cells (at protein level).

**WDR1 Antibody - Protocols**

Provided below are standard protocols that you may find useful for product applications.

- [Western Blot](#)
- [Blocking Peptides](#)
- [Dot Blot](#)
- [Immunohistochemistry](#)
- [Immunofluorescence](#)
- [Immunoprecipitation](#)
- [Flow Cytometry](#)
- [Cell Culture](#)

**WDR1 Antibody - Images**

Western blot analysis of WDR1 expression in Raji cell lysate.