

GPRC5B Antibody
Rabbit mAb
Catalog # AP92962**Specification**

GPRC5B Antibody - Product Information

Application	WB
Primary Accession	Q9NZH0
Clonality	Monoclonal
Other Names	
Gprc5b; RAIG2;	
Isotype	Rabbit IgG
Host	Rabbit
Calculated MW	44795 Da

GPRC5B Antibody - Additional Information

Dilution	WB~~1:1000
Purification	Affinity-chromatography
Immunogen	A synthesized peptide derived from human GPRC5B
Description	Unknown. This retinoic acid-inducible G-protein coupled receptor provide evidence for a possible interaction between retinoid and G-protein signaling pathways.
Storage Condition and Buffer	Rabbit IgG in phosphate buffered saline , pH 7.4, 150mM NaCl, 0.02% sodium azide and 50% glycerol. Store at +4°C short term. Store at -20°C long term. Avoid freeze / thaw cycle.

GPRC5B Antibody - Protein Information**Name** GPRC5B**Synonyms** RAIG2**Function**

G-protein coupled receptor involved in the regulation of cell volume.

Cellular Location

Cell membrane; Multi-pass membrane protein. Cytoplasmic vesicle membrane; Multi-pass membrane protein. Note=Localized in the plasma membrane and perinuclear vesicles

Tissue Location

Expression is high in kidney, pancreas, and testis, medium in brain, heart, prostate, small intestine, and spleen, low in liver, placenta, skeletal muscle, colon, ovary, and thymus, and not

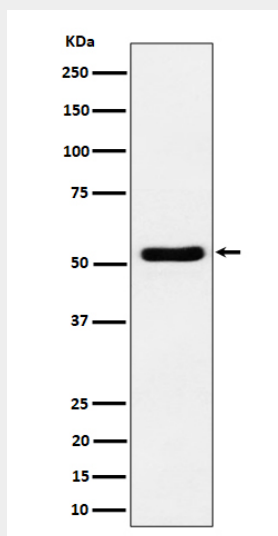
detectable in lung and peripheral leukocyte. According to PubMed:10945465, highly expressed in most brain areas examined, with the highest levels observed in corpus callosum, caudate nucleus, putamen, substantia nigra, thalamus, hippocampus, and spinal cord as well as in dorsal root ganglia (DRG). Expressed in glia limitans, ependymal cells, astrocyte cell bodies, the perivascular region in astrocyte endfeet, but not in neurons (PubMed:37143309). In the periphery, expression levels are relatively low, compared to the CNS, with the strongest expression detected in pancreas, testis, uterus, and stomach.

GPRC5B Antibody - Protocols

Provided below are standard protocols that you may find useful for product applications.

- [Western Blot](#)
- [Blocking Peptides](#)
- [Dot Blot](#)
- [Immunohistochemistry](#)
- [Immunofluorescence](#)
- [Immunoprecipitation](#)
- [Flow Cytometry](#)
- [Cell Culture](#)

GPRC5B Antibody - Images



Western blot analysis of GPRC5B expression in Jurkat cell lysate.