

**PREB Antibody**  
**Rabbit mAb**  
**Catalog # AP92975****Specification****PREB Antibody - Product Information**

Application	WB, IHC, ICC
Primary Accession	<a href="#">O9HCU5</a>
Clonality	Monoclonal
<b>Other Names</b>	
Preb; SEC12;	
Isotype	Rabbit IgG
Host	Rabbit
Calculated MW	45468 Da

**PREB Antibody - Additional Information**

Dilution	WB~~1:1000 IHC~~1:100~500 ICC~~N/A
Purification	Affinity-chromatography
Immunogen	A synthesized peptide derived from human PREB
Description	Was first identified based on its probable role in the regulation of pituitary gene transcription. Binds to the prolactin gene (PRL) promoter and seems to activate transcription (By similarity). Guanine nucleotide exchange factor that activates SARA2. Required for the formation of COPII transport vesicles from the ER.
Storage Condition and Buffer	Rabbit IgG in phosphate buffered saline , pH 7.4, 150mM NaCl, 0.02% sodium azide and 50% glycerol. Store at +4°C short term. Store at -20°C long term. Avoid freeze / thaw cycle.

**PREB Antibody - Protein Information**

**Name** PREB {ECO:0000303|PubMed:10920239, ECO:0000312|HGNC:HGNC:9356}

**Function**

Guanine nucleotide exchange factor (GEF) that regulates the assembly of the coat protein complex II/COPII in endoplasmic reticulum (ER) to Golgi vesicle-mediated transport. Selectively activates SAR1A and SAR1B by promoting the exchange of guanosine diphosphate (GDP) for guanosine triphosphate (GTP) in these small GTPases (PubMed:<a href="http://www.uniprot.org/citations/32358066" target="\_blank">32358066</a>). In their activated GTP-bound state, SAR1A and SAR1B insert into the membrane of the endoplasmic

reticulum where they recruit the remainder of the coat protein complex II/COPII which is responsible for both the sorting of proteins and the deformation and budding of membranes into vesicles destined to the Golgi (PubMed:<a href="http://www.uniprot.org/citations/32358066" target="\_blank">32358066</a>).

#### Cellular Location

Endoplasmic reticulum membrane {ECO:0000250|UniProtKB:Q9WTV0}; Single-pass membrane protein {ECO:0000250|UniProtKB:Q9WTV0}. Nucleus {ECO:0000250|UniProtKB:Q9WTV0}  
Note=Concentrates at endoplasmic reticulum exit sites (ERES), also known as transitional endoplasmic reticulum (tER)

#### Tissue Location

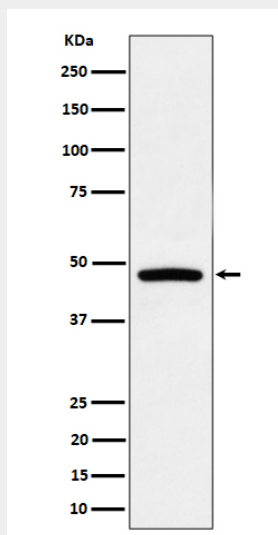
Ubiquitous.

### PREB Antibody - Protocols

Provided below are standard protocols that you may find useful for product applications.

- [Western Blot](#)
- [Blocking Peptides](#)
- [Dot Blot](#)
- [Immunohistochemistry](#)
- [Immunofluorescence](#)
- [Immunoprecipitation](#)
- [Flow Cytometry](#)
- [Cell Culture](#)

### PREB Antibody - Images



Western blot analysis of PREB expression in Raji cell lysate.