

PSMC5 Antibody
Rabbit mAb
Catalog # AP92988**Specification**

PSMC5 Antibody - Product Information

| | |
|-------------------|------------------------|
| Application | WB, IHC, FC, ICC, IP |
| Primary Accession | P62195 |
| Reactivity | Rat |
| Clonality | Monoclonal |

Other Names

Cim3; p45; p45/SUG; PSMC5; Rpt6; SUG1; TBP10; TRIP1;

| | |
|---------------|------------|
| Isotype | Rabbit IgG |
| Host | Rabbit |
| Calculated MW | 45626 Da |

PSMC5 Antibody - Additional Information

| | |
|------------------------------|--|
| Dilution | WB~~1:1000 IHC~~1:100~500 FC~~1:10~50 ICC~~N/A IP~~N/A |
| Purification | Affinity-chromatography |
| Immunogen | A synthesized peptide derived from human PSMC5 |
| Description | The 26S protease is involved in the ATP-dependent degradation of ubiquitinated proteins. The regulatory (or ATPase) complex confers ATP dependency and substrate specificity to the 26S complex. |
| Storage Condition and Buffer | Rabbit IgG in phosphate buffered saline , pH 7.4, 150mM NaCl, 0.02% sodium azide and 50% glycerol. Store at +4°C short term. Store at -20°C long term. Avoid freeze / thaw cycle. |

PSMC5 Antibody - Protein Information**Name** PSMC5**Synonyms** SUG1**Function**

Component of the 26S proteasome, a multiprotein complex involved in the ATP-dependent degradation of ubiquitinated proteins. This complex plays a key role in the maintenance of protein homeostasis by removing misfolded or damaged proteins, which could impair cellular functions,

and by removing proteins whose functions are no longer required. Therefore, the proteasome participates in numerous cellular processes, including cell cycle progression, apoptosis, or DNA damage repair. PSMC5 belongs to the heterohexameric ring of AAA (ATPases associated with diverse cellular activities) proteins that unfolds ubiquitinated target proteins that are concurrently translocated into a proteolytic chamber and degraded into peptides.

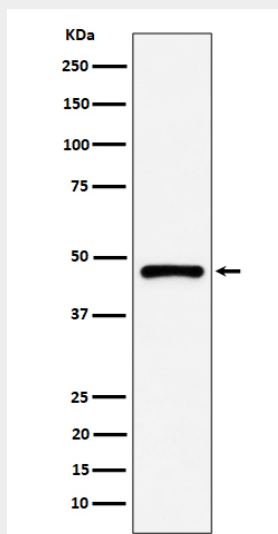
Cellular Location

Cytoplasm. Nucleus.

PSMC5 Antibody - Protocols

Provided below are standard protocols that you may find useful for product applications.

- [Western Blot](#)
- [Blocking Peptides](#)
- [Dot Blot](#)
- [Immunohistochemistry](#)
- [Immunofluorescence](#)
- [Immunoprecipitation](#)
- [Flow Cytometry](#)
- [Cell Culture](#)

PSMC5 Antibody - Images

Western blot analysis of PSMC5 expression in A431 cell lysate.