

AAMP Antibody
Rabbit mAb
Catalog # AP92989**Specification**

AAMP Antibody - Product Information

Application	WB, FC, ICC
Primary Accession	Q13685
Reactivity	Rat
Clonality	Monoclonal
Other Names	
AAMP;	

Isotype	Rabbit IgG
Host	Rabbit
Calculated MW	46751 Da

AAMP Antibody - Additional Information

Dilution	WB~~1:1000 FC~~1:10~50 ICC~~N/A
Purification	Affinity-chromatography
Immunogen	A synthesized peptide derived from human AAMP
Description	Plays a role in angiogenesis and cell migration. In smooth muscle cell migration, may act through the RhoA pathway.
Storage Condition and Buffer	Rabbit IgG in phosphate buffered saline , pH 7.4, 150mM NaCl, 0.02% sodium azide and 50% glycerol. Store at +4°C short term. Store at -20°C long term. Avoid freeze / thaw cycle.

AAMP Antibody - Protein Information**Name** AAMP**Function**

Plays a role in angiogenesis and cell migration. In smooth muscle cell migration, may act through the RhoA pathway.

Cellular Location

Cell membrane. Cytoplasm.

Tissue Location

Expressed in metastatic melanoma, liver, skin, kidney, heart, lung, lymph node, skeletal muscle and brain, and also in A2058 melanoma cells and activated T-cells (at protein level) Expressed in

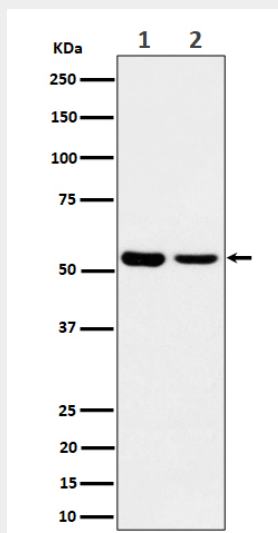
blood vessels. Strongly expressed in endothelial cells, cytotrophoblasts, and poorly differentiated. colon adenocarcinoma cells found in lymphatics.

AAMP Antibody - Protocols

Provided below are standard protocols that you may find useful for product applications.

- [Western Blot](#)
- [Blocking Peptides](#)
- [Dot Blot](#)
- [Immunohistochemistry](#)
- [Immunofluorescence](#)
- [Immunoprecipitation](#)
- [Flow Cytometry](#)
- [Cell Culture](#)

AAMP Antibody - Images



Western blot analysis of AAMP expression in (1) A375 lysate; (2) MCF7 cell lysate.