

**DAZAP1 Antibody**  
**Rabbit mAb**  
**Catalog # AP92991****Specification**

---

**DAZAP1 Antibody - Product Information**

Application	WB
Primary Accession	<a href="#">Q96EP5</a>
Reactivity	Rat
Clonality	Monoclonal
<b>Other Names</b>	
DAZ associated protein 1; Dazap1;	
Isotype	Rabbit IgG
Host	Rabbit
Calculated MW	43383 Da

**DAZAP1 Antibody - Additional Information**

Dilution	WB~~1:1000
Purification	Affinity-chromatography
Immunogen	A synthesized peptide derived from human DAZAP1
Description	RNA-binding protein, which may be required during spermatogenesis.
Storage Condition and Buffer	Rabbit IgG in phosphate buffered saline , pH 7.4, 150mM NaCl, 0.02% sodium azide and 50% glycerol. Store at +4°C short term. Store at -20°C long term. Avoid freeze / thaw cycle.

**DAZAP1 Antibody - Protein Information****Name** DAZAP1**Function**

RNA-binding protein, which may be required during spermatogenesis.

**Cellular Location**

Cytoplasm. Nucleus. Note=Predominantly cytoplasmic (By similarity). Nuclear at some stages of spermatozoides development. In midpachytene spermatocytes, it is localized in both the cytoplasm and the nuclei and is clearly excluded from the sex vesicles. In round spermatids, it localizes mainly in the nuclei, whereas in elongated spermatids, it localizes to the cytoplasm (By similarity)

**Tissue Location**

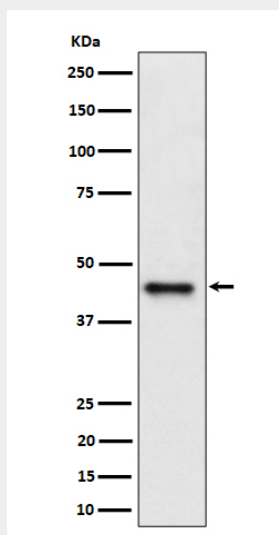
Mainly expressed in testis. Expressed to a lower level in thymus. Weakly or not expressed in heart, liver, brain, placenta, lung, skeletal muscle, kidney and pancreas

## DAZAP1 Antibody - Protocols

Provided below are standard protocols that you may find useful for product applications.

- [Western Blot](#)
- [Blocking Peptides](#)
- [Dot Blot](#)
- [Immunohistochemistry](#)
- [Immunofluorescence](#)
- [Immunoprecipitation](#)
- [Flow Cytometry](#)
- [Cell Culture](#)

## DAZAP1 Antibody - Images



Western blot analysis of DAZAP1 expression in Jurkat cell lysate.