

TEMT Antibody
Rabbit mAb
Catalog # AP92993**Specification**

TEMT Antibody - Product InformationApplication
Primary Accession
Reactivity
Clonality**WB**
[O95050](#)
Rat
Monoclonal**Other Names**

Amine N methyltransferase; Arylamine N methyltransferase; Indolethylamine N methyltransferase; INMT; TEMT; Thioether S methyltransferase;

Isotype
Host
Calculated MW**Rabbit IgG**
Rabbit
28891 Da**TEMT Antibody - Additional Information**Dilution
Purification
Immunogen**WB~~1:1000**
Affinity-chromatography
A synthesized peptide derived from human
TEMT

Description

Catalyzes the N-methylation of tryptamine and structurally related compounds.
Rabbit IgG in phosphate buffered saline , pH 7.4, 150mM NaCl, 0.02% sodium azide and 50% glycerol. Store at +4°C short term. Store at -20°C long term. Avoid freeze / thaw cycle.

Storage Condition and Buffer

TEMT Antibody - Protein Information**Name** INMT**Function**

Functions as a thioether S-methyltransferase and is active with a variety of thioethers and the corresponding selenium and tellurium compounds, including 3-methylthiopropionaldehyde, dimethyl selenide, dimethyl telluride, 2-methylthioethylamine, 2- methylthioethanol, methyl-n-propyl sulfide and diethyl sulfide. Plays an important role in the detoxification of selenium compounds (By similarity). Catalyzes the N-methylation of tryptamine and structurally related compounds.

Cellular Location

Cytoplasm.

Tissue Location

Widely expressed. The highest levels were in thyroid, adrenal gland, adult and fetal lung.

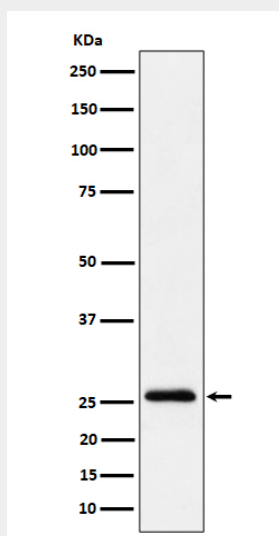
Intermediate levels in heart, placenta, skeletal muscle, testis, small intestine, pancreas, stomach, spinal cord, lymph node and trachea. Very low levels in adult and fetal kidney and liver, in adult spleen, thymus, ovary, colon and bone marrow. Not expressed in peripheral blood leukocytes and brain

TEMT Antibody - Protocols

Provided below are standard protocols that you may find useful for product applications.

- [Western Blot](#)
- [Blocking Peptides](#)
- [Dot Blot](#)
- [Immunohistochemistry](#)
- [Immunofluorescence](#)
- [Immunoprecipitation](#)
- [Flow Cytometry](#)
- [Cell Culture](#)

TEMT Antibody - Images



Western blot analysis of TEMT expression in A549 cell lysate.