

FPGS Antibody
Rabbit mAb
Catalog # AP92994**Specification**

FPGS Antibody - Product Information

Application	WB
Primary Accession	<u>Q05932</u>
Reactivity	Rat
Clonality	Monoclonal
Other Names	
FOLC; Folylpoly gamma glutamate synthetase; FPGS; Tetrahydrofolate synthase;	
Isotype	Rabbit IgG
Host	Rabbit
Calculated MW	64609 Da

FPGS Antibody - Additional Information

Dilution	WB~~1:1000
Purification	Affinity-chromatography
Immunogen	A synthesized peptide derived from human FPGS
Description	Conversion of folates to polyglutamate derivatives. This allows tissues to concentrate folate at higher levels than in plasma.
Storage Condition and Buffer	Rabbit IgG in phosphate buffered saline , pH 7.4, 150mM NaCl, 0.02% sodium azide and 50% glycerol. Store at +4°C short term. Store at -20°C long term. Avoid freeze / thaw cycle.

FPGS Antibody - Protein Information**Name** FPGS**Function**

Catalyzes conversion of folates to polyglutamate derivatives allowing concentration of folate compounds in the cell and the intracellular retention of these cofactors, which are important substrates for most of the folate-dependent enzymes that are involved in one-carbon transfer reactions involved in purine, pyrimidine and amino acid synthesis. Unsubstituted reduced folates are the preferred substrates. Metabolizes methotrexate (MTX) to polyglutamates.

Cellular Location

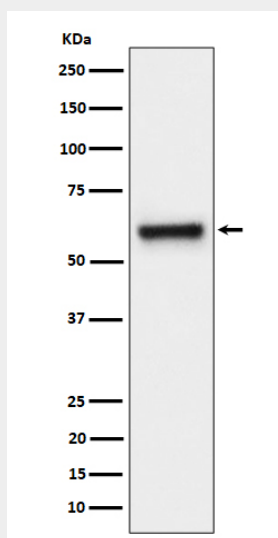
[Isoform 1]: Mitochondrion inner membrane. Mitochondrion matrix

FPGS Antibody - Protocols

Provided below are standard protocols that you may find useful for product applications.

- [Western Blot](#)
- [Blocking Peptides](#)
- [Dot Blot](#)
- [Immunohistochemistry](#)
- [Immunofluorescence](#)
- [Immunoprecipitation](#)
- [Flow Cytometry](#)
- [Cell Culture](#)

FPGS Antibody - Images



Western blot analysis of FPGS expression in HeLa cell lysate.